

Contracttekeningen woningbouw in plan de Zeegstraat te Reusel (kv. 1-7 en 12)



Renvooi

—X	wandlichtpunt
☒	plafondlichtpunt
⚡	enkelpolige schakelaar
⚡	wisselschakelaar
—K	enkele wandcontactdoos met randaarde
—K	dubbele wandcontactdoos met randaarde
●	CO2
●	CO2 meter MV
●	TH
●	thermostaat
●	MV
●	MV standen schakelaar
○	loze leiding tbv aansluiting
—K	wandcontactdoos 3 fase + nul + aarde
Ⓛ	deurbel
Ⓛ	druknop deurbel
Ⓛ	aarding
Ⓛ	afzuigpunt mechanische ventilatie (in plafond)
Ⓛ	afzuigpunt mechanische ventilatie (in wand)
Ⓛ	natuurlijke ventilatie
Ⓛ	rookmelder
Ⓛ	buitenlichtpunt
Ⓛ	verdeler vloerverwarming
vent.	indicatieve opstelplaats mechanische ventilatie unit
WP	indicatieve opstelplaats warmtepomp
Ⓛ	elektrische radiator (plaats is indicatief)
OV	Omvormer (plaats is indicatief)

INHOUDSOPGAVE

	Situatie 1	VK-02
Kavel 01 t/m 04;	begane grond	VK-03
Kavel 01 t/m 04;	eerste verdieping	VK-04
Kavel 01 t/m 04;	tweede verdieping	VK-05
Kavel 05 t/m 06;	begane grond	VK-06
Kavel 05 t/m 06;	eerste verdieping	VK-07
Kavel 05 t/m 06;	tweede verdieping	VK-08
Kavel 01 t/m 06;	gevelaanzichten	VK-09
Kavel 01 t/m 06;	doorsnede	VK-10
Kavel 07;	begane grond (senioren)	VK-11
Kavel 07;	eerste verdieping (senioren)	VK-12
Kavel 07;	tweede verdieping (senioren)	VK-13
Kavel 07;	begane grond (gezins)	VK-14
Kavel 07;	eerste verdieping (gezins)	VK-15
Kavel 07;	tweede verdieping (gezins)	VK-16
Kavel 07;	gevelaanzichten	VK-17
Kavel 07;	doorsnede	VK-18
Kavel 12;	begane grond	VK-19
Kavel 12;	eerste verdieping	VK-20
Kavel 12;	tweede verdieping	VK-21
Kavel 12;	gevelaanzichten	VK-22
Kavel 12;	doorsnede	VK-23
Mantelzorg;	begane grond	VK-24
Mantelzorg;	eerste verdieping	VK-25
Mantelzorg;	gevelaanzichten	VK-26
Mantelzorg;	doorsnede	VK-27

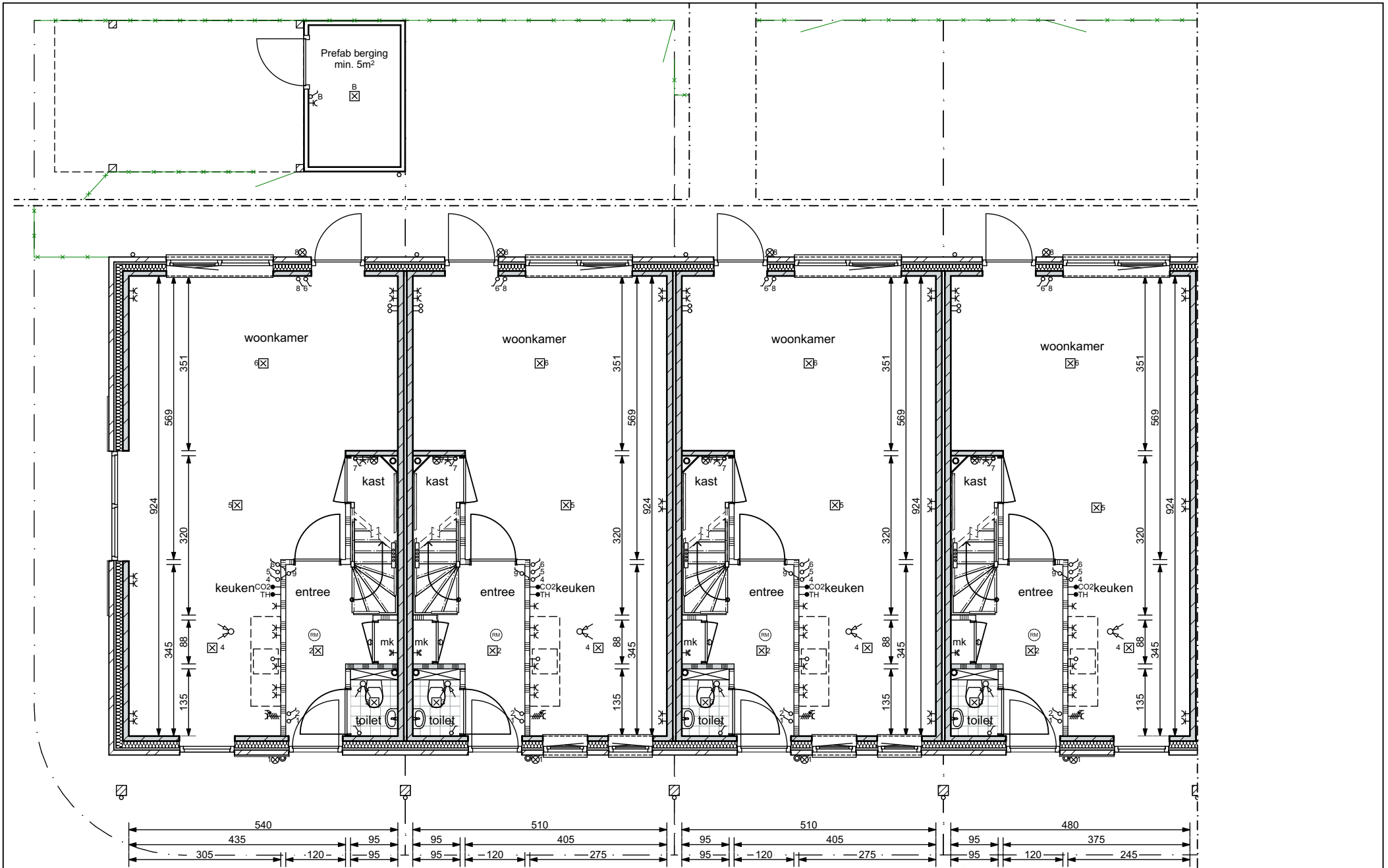
Optietekening; kavel 1
Optietekening; kavel 2+3
Optietekening; kavel 4
Optietekening; kavel 5
Optietekening; kavel 6
Optietekening; kavel 7 (gezins variant)
Optietekening; kavel 7 (senioren variant)

ALLE OP TEKENING AANGEGEVEN MAATVOERING IS INDICATIEF.

De maatvoering van de bergingen is afhankelijk van het bouwkevel.

Aantal zonnepanelen zijn indicatief en kunnen mogelijk herberekend worden ivm verbeterde panelen ten tijde van de bouw.

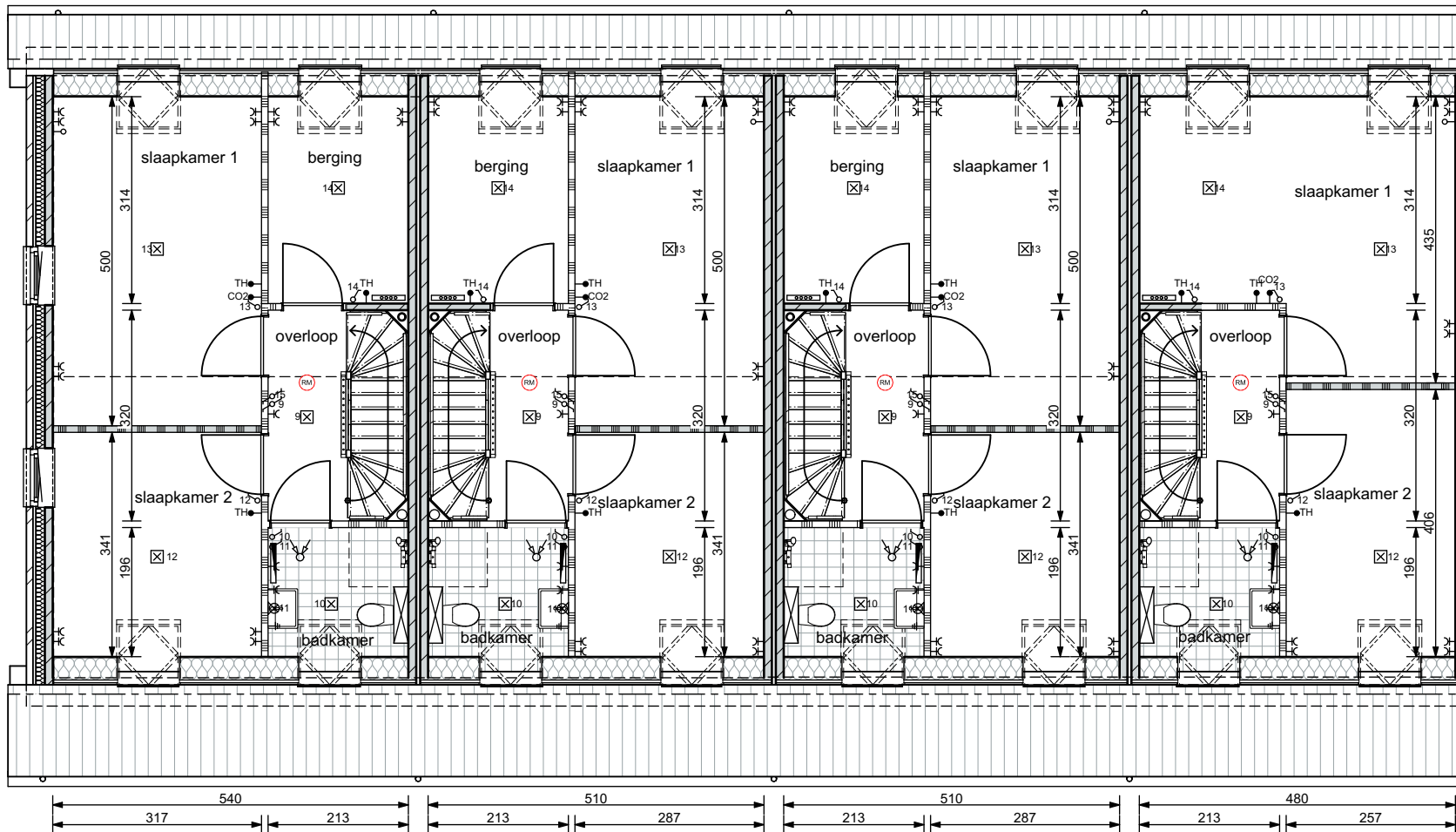
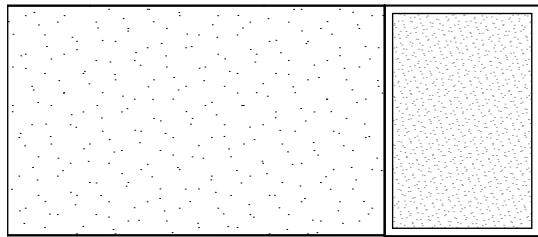
Het aantal en positie van de leidingschachten, lepe hoeken, warmtepomp, MV-unit, ventilatieroosters, ventilatieventielen, HWA's, verdelers en radiatoren zijn indicatief weergegeven. De definitieve positie van deze installaties worden bepaald door de installateurs.



VK-03
 Kavel 01 t/m 04; begane grond
 13 april 2026

vanGisberg ⁺ Kavel 4
 gewoon goed.

geWOON
 architecten



VK-04
 Kavel 01 t/m 04; eerste verdieping
 13 april 2026

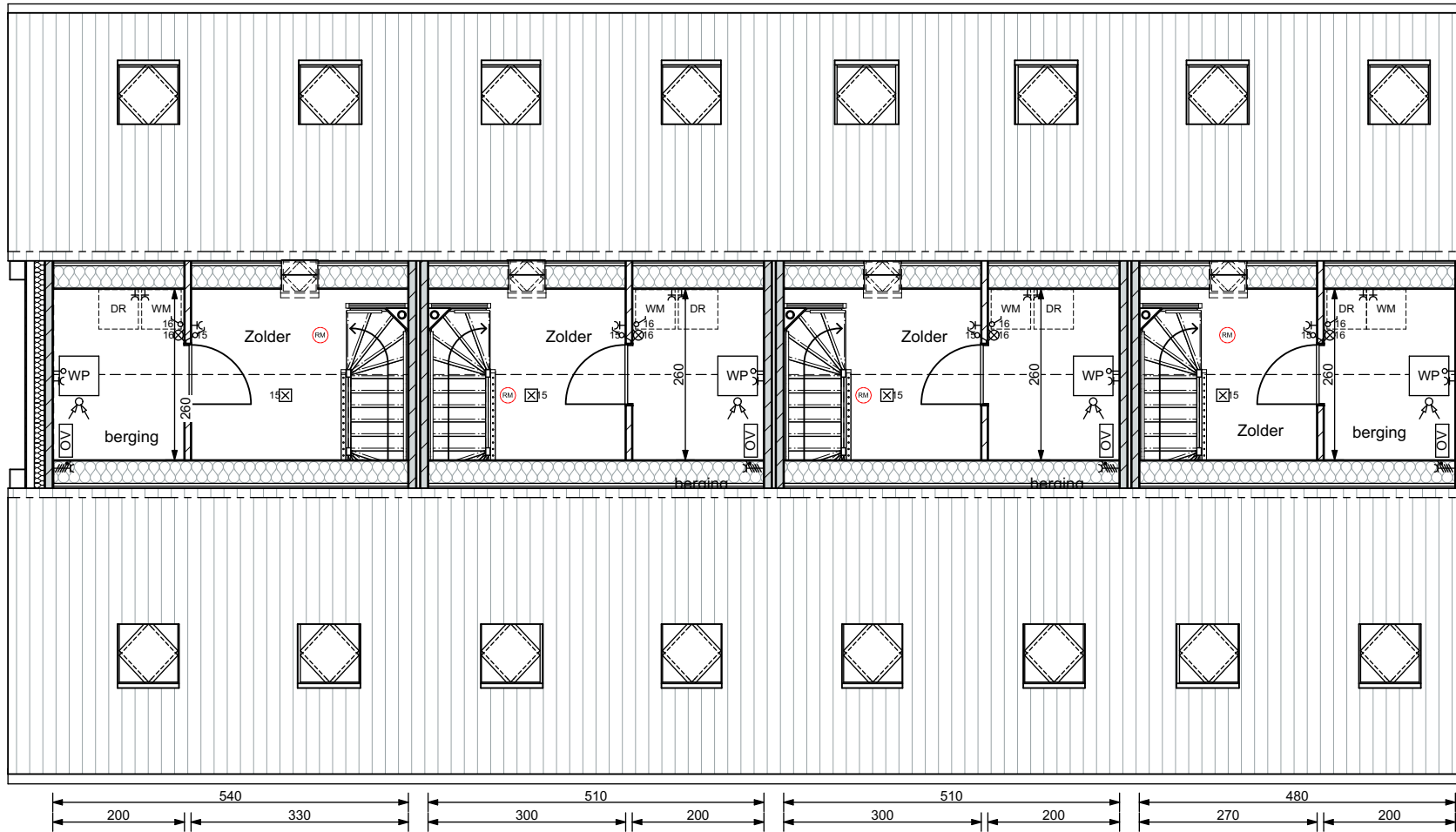
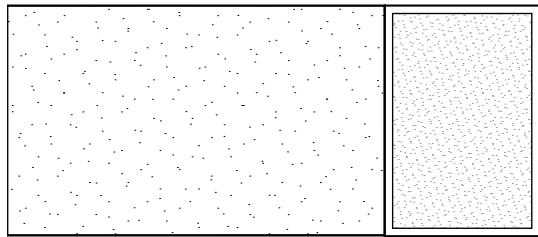
Kavel 1

Kavel 2

Kavel 3

vanGisberg ^{ca.} Kavel 4
 gewoon goed.

geWOON
 architecten



VK-05
 Kavel 01 t/m 04; tweede verdieping
 13 april 2026

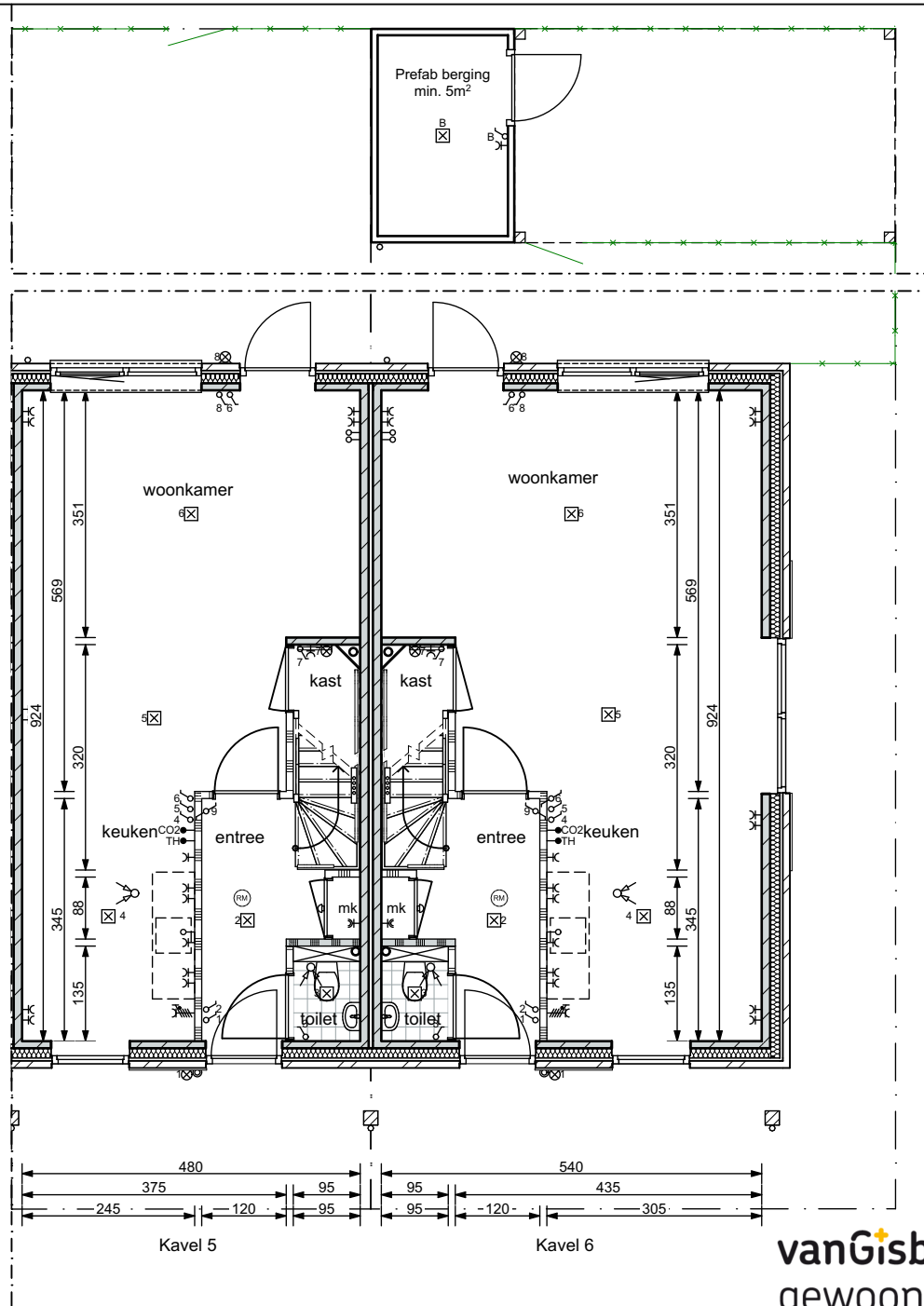
Kavel 1

Kavel 2

Kavel 3

vanGisberg ^{Kavel 4}
 gewoon goed.

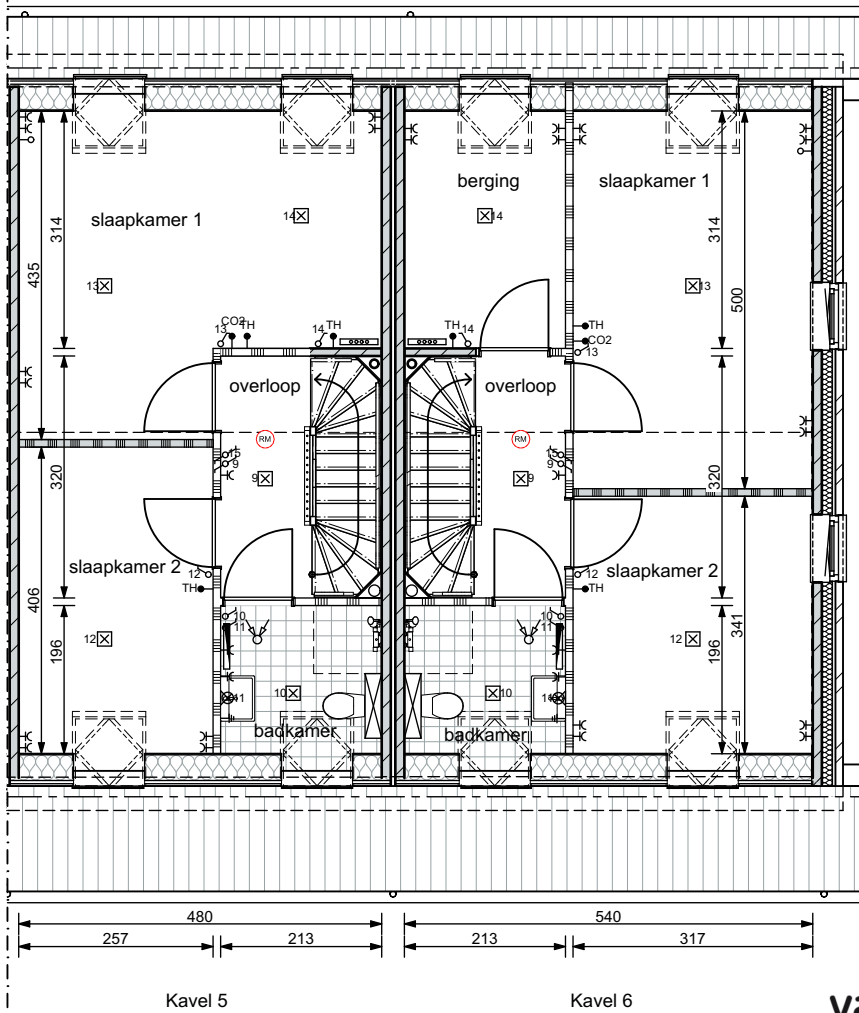
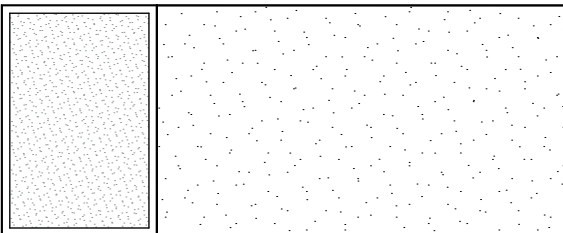
geWOON
 architecten



VK-06
 Kavel 05 t/m 06; begane grond (3)
 13 april 2026

vanGisbergen
 gewoon goed.

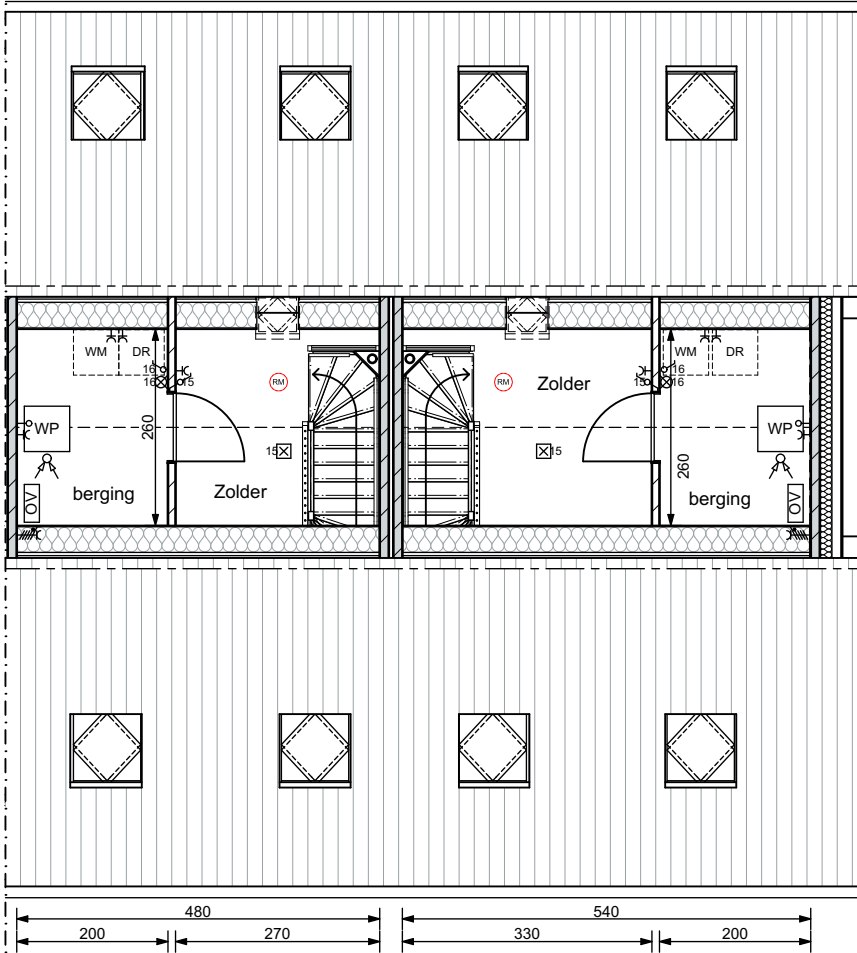
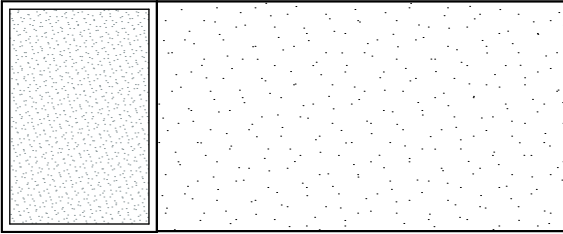
geWOON
 architecten



VK-07
Kavel 05 t/m 06; eerste verdieping
13 april 2026

vanGisbergen
gewoon goed.

geWOON
architecten



VK-08
Kavel 05 t/m 06; tweede verdieping
13 april 2026

vanGisbergen
gewoon goed.

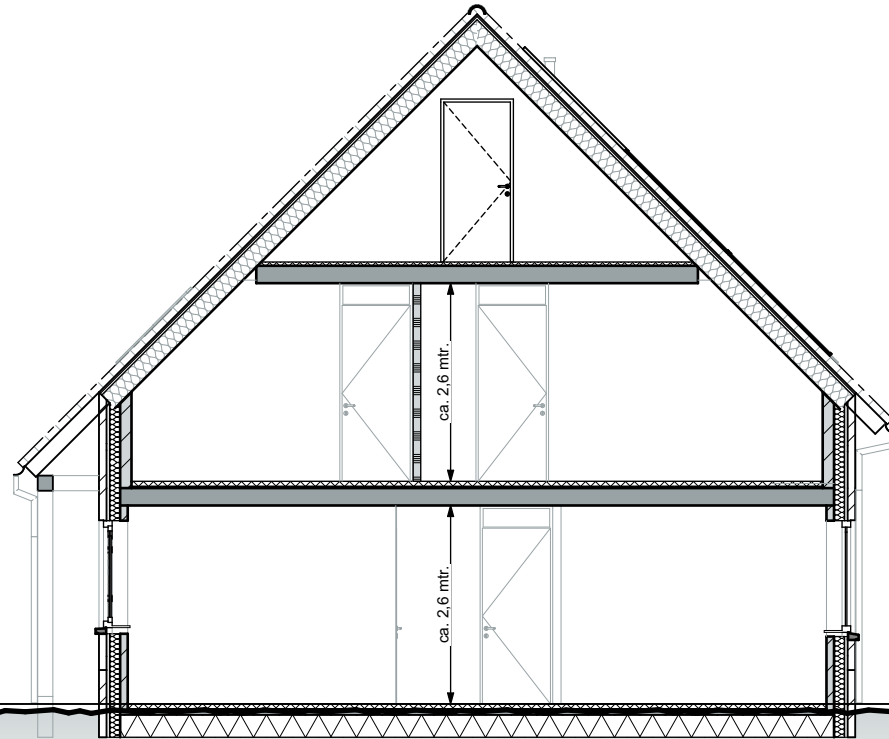
geWOON
architecten



VK-09
Kavel 01 t/m 06; gevelaanzichten
13 april 2026

vanGisbergen
gewoon goed.

geWOON
architecten

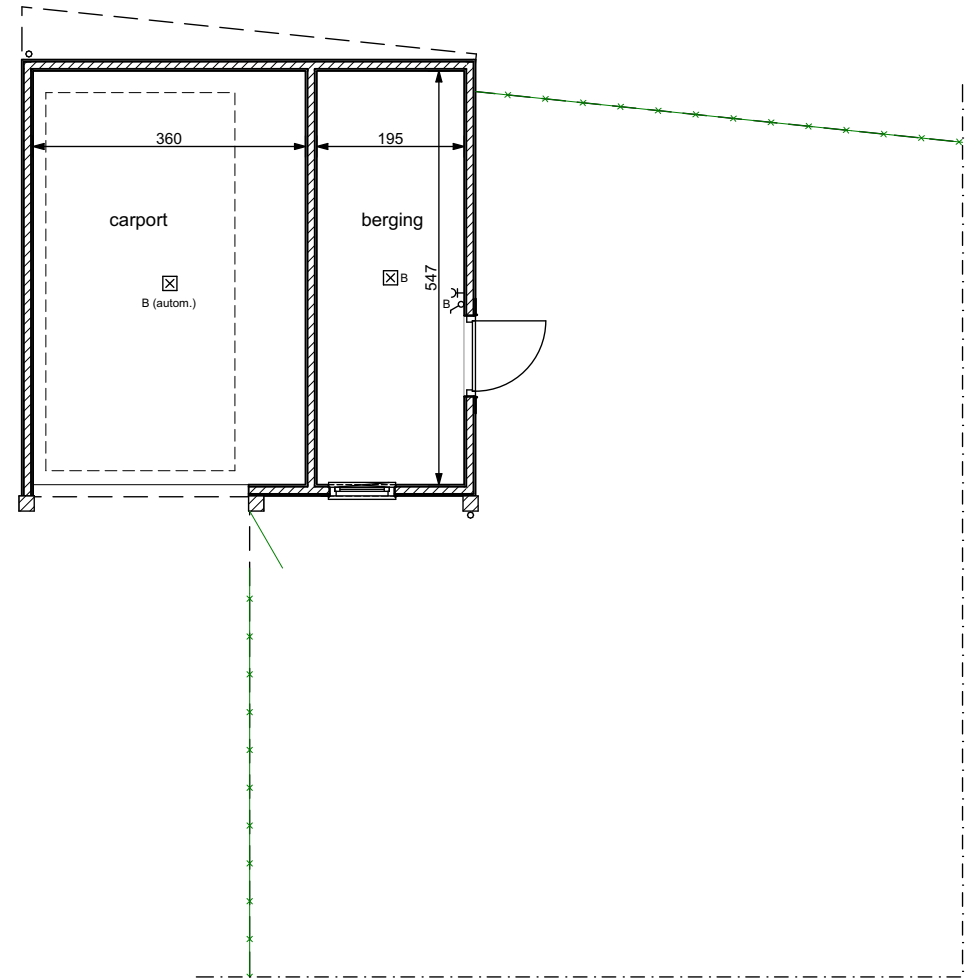
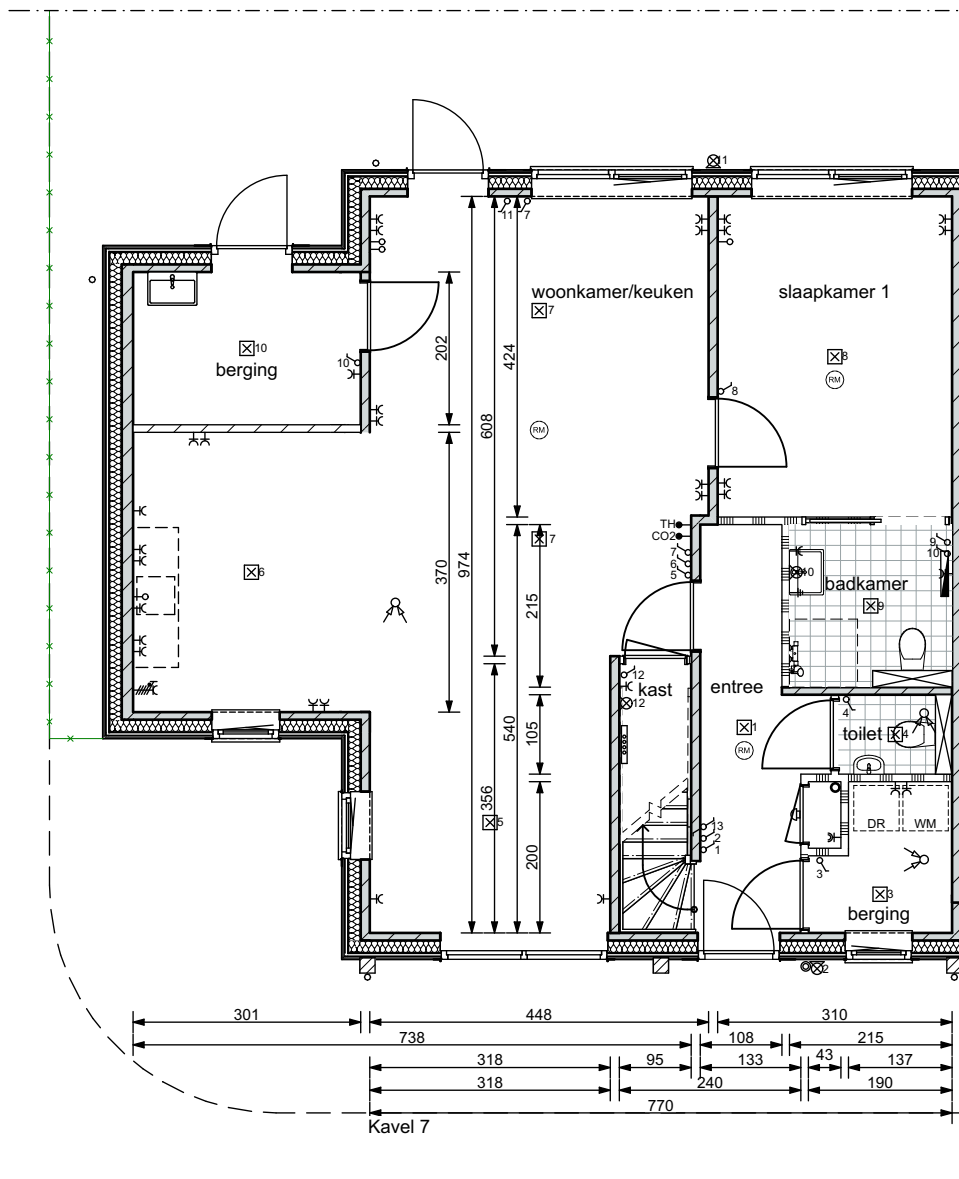


DOORSNEDE KAVEL 1 T/M 6

VK-10
Kavel 01 t/m 06; doorsnede
13 april 2026

vanGisbergen
gewoon goed.

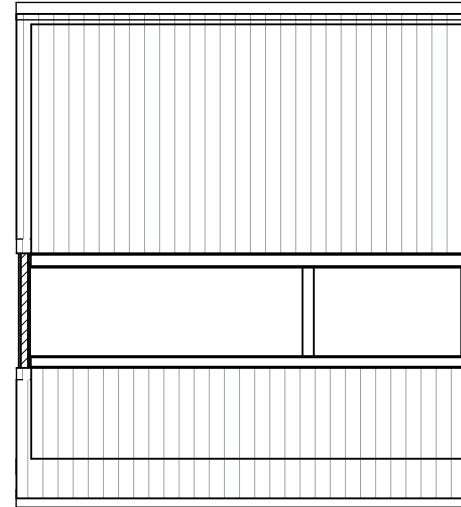
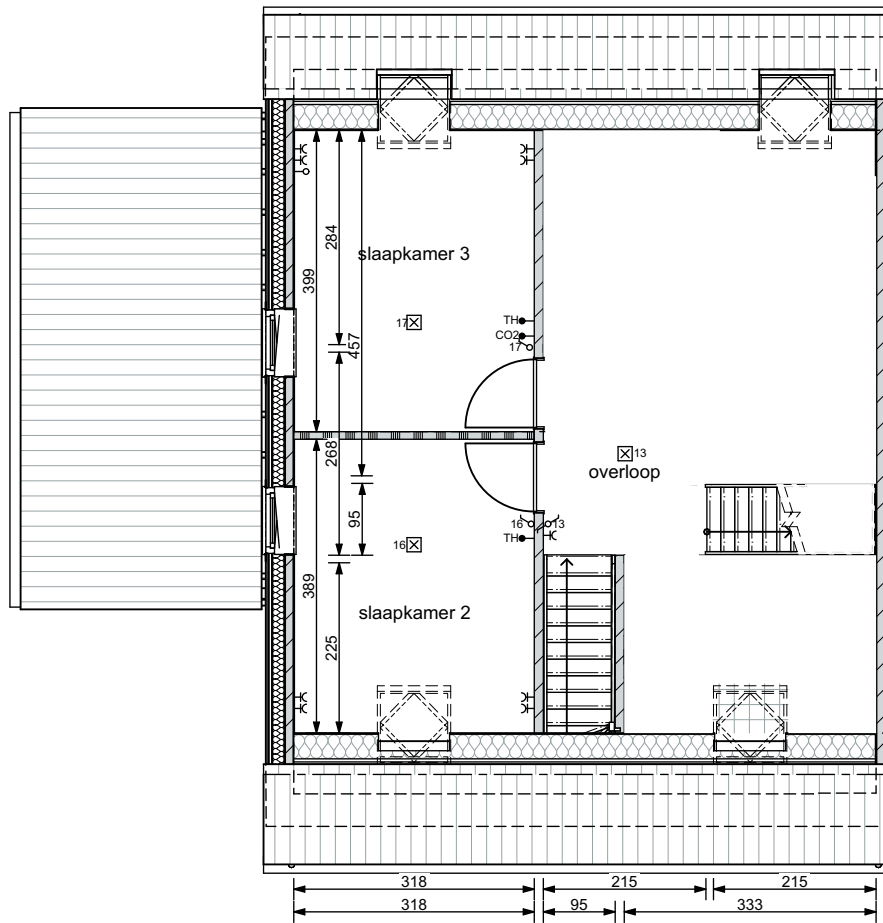
geWOON
architecten

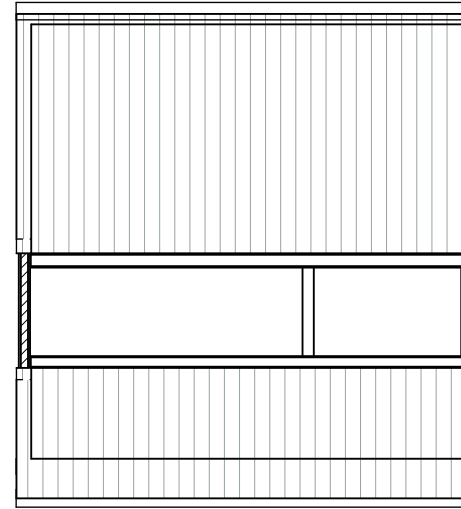
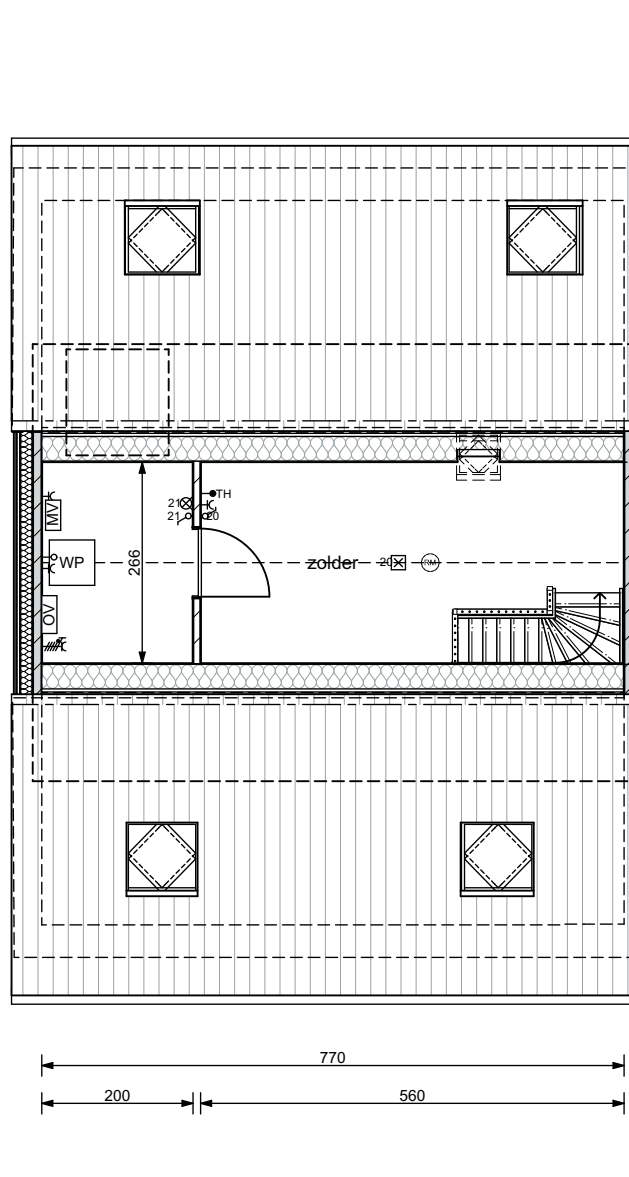


VK-11
 Kavel 7; begane grond (senioren)
 13 april 2026

vanGisbergen
 gewoon goed.

geWOON
 architecten

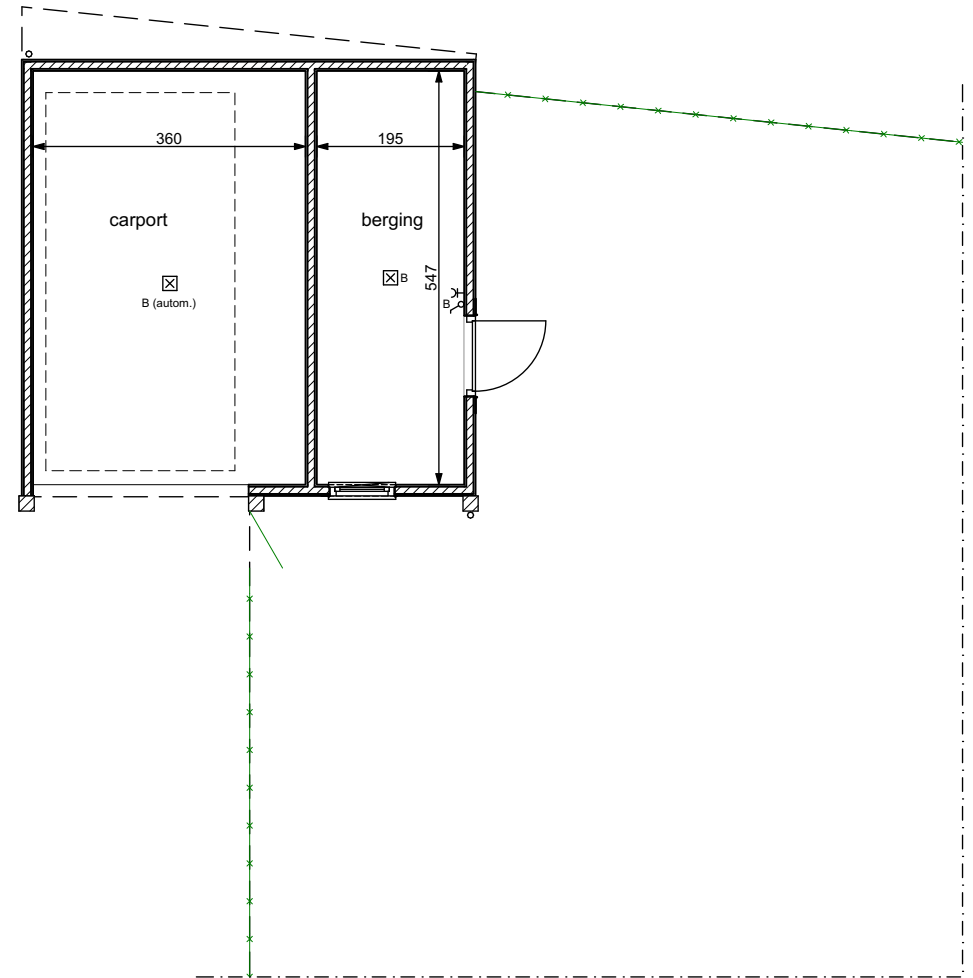
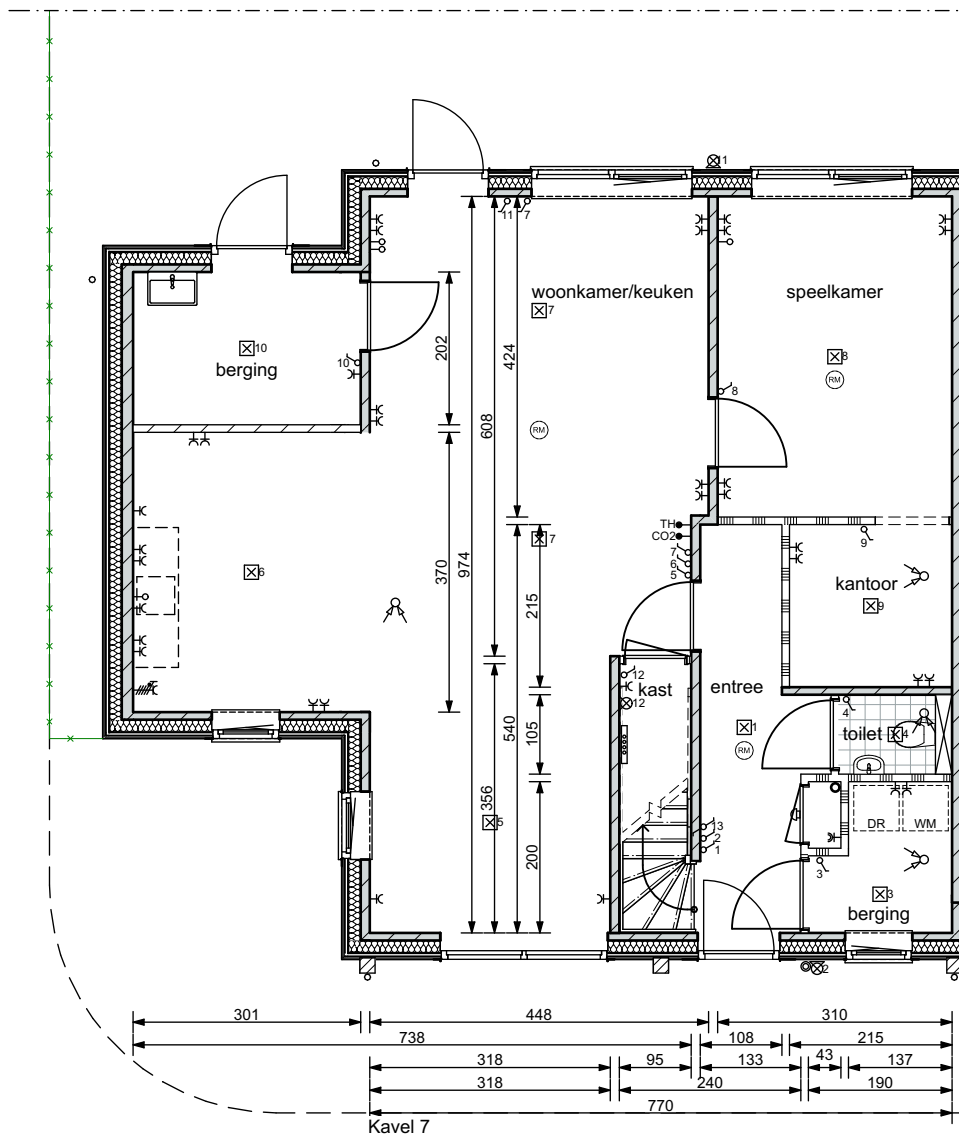




VK-13
 Kavel 7; tweede verdieping (senioren)
 13 april 2026

vanGisbergen
 gewoon goed.

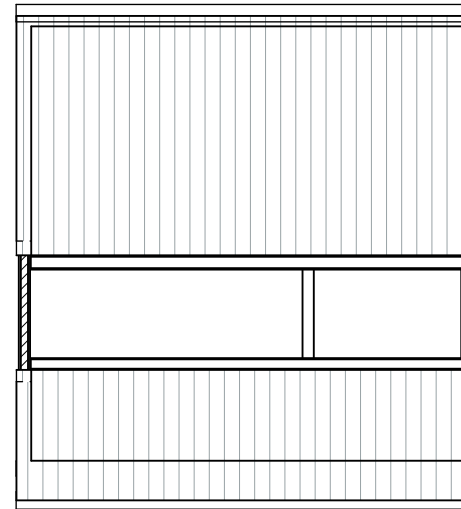
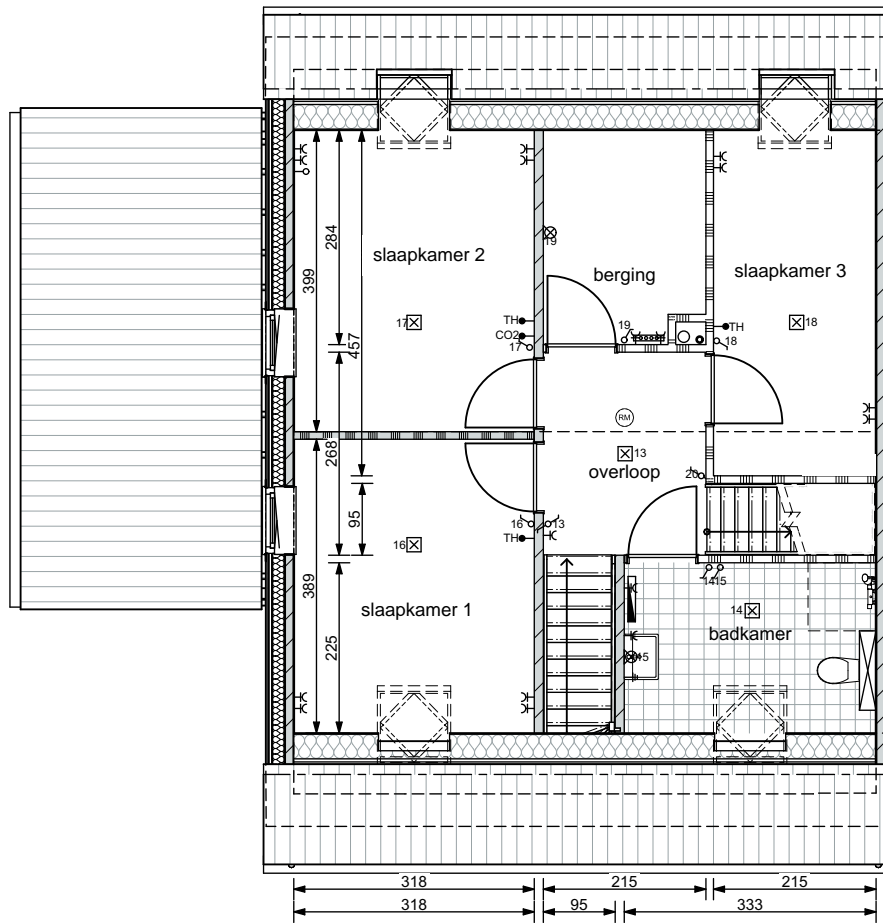
geWOON
 architecten



VK-14
Kavel 7; begane grond (gezins)
13 april 2026

vanGisbergen
gewoon goed.

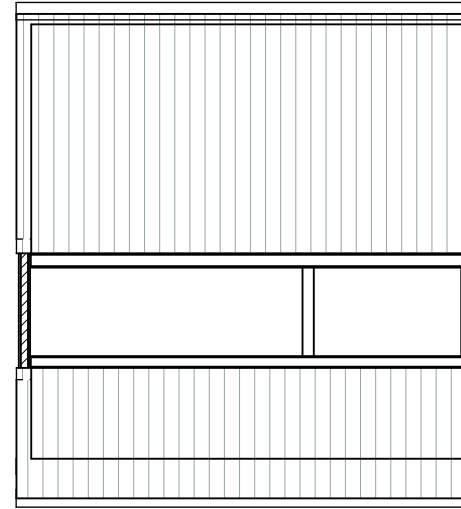
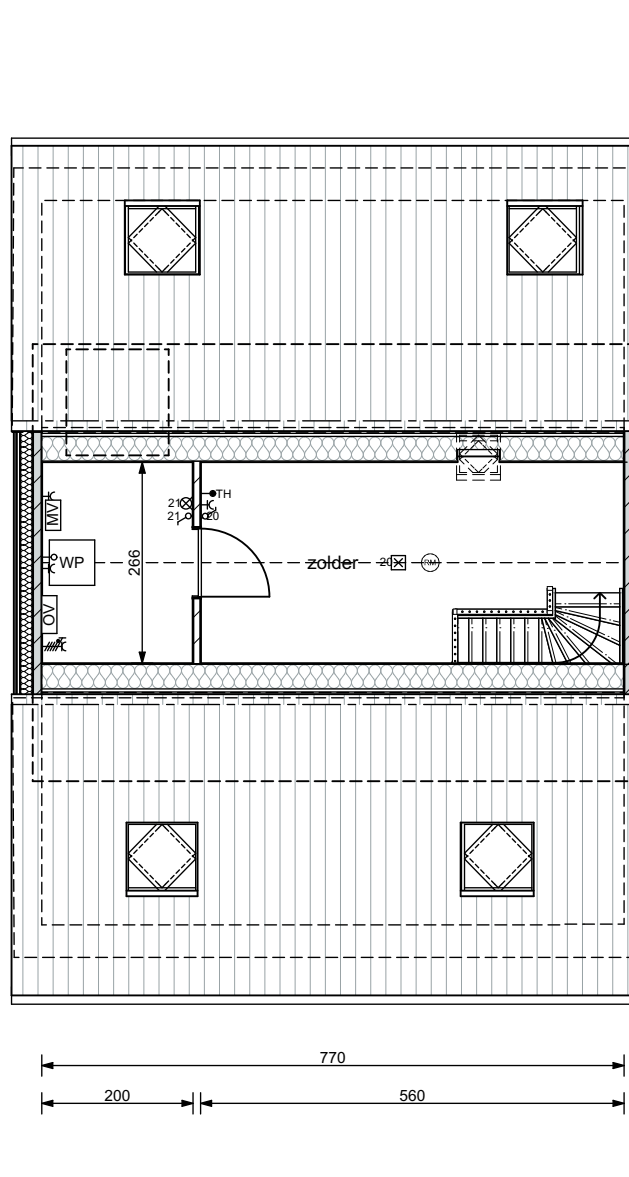
geWOON
architecten



VK-15
 Kavel 7; eerste verdieping (gezins)
 13 april 2026

vanGisbergen
 gewoon goed.

geWOON
 architecten



VK-16
 Kavel 7; tweede verdieping (gezins)
 13 april 2026

vanGisbergen
 gewoon goed.

geWOON
 architecten



Kavel 7

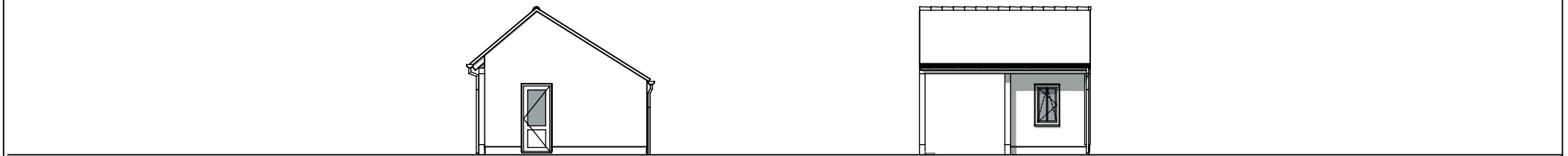
Kavel 7

Kavel 7

LINKER ZIJGEVEL

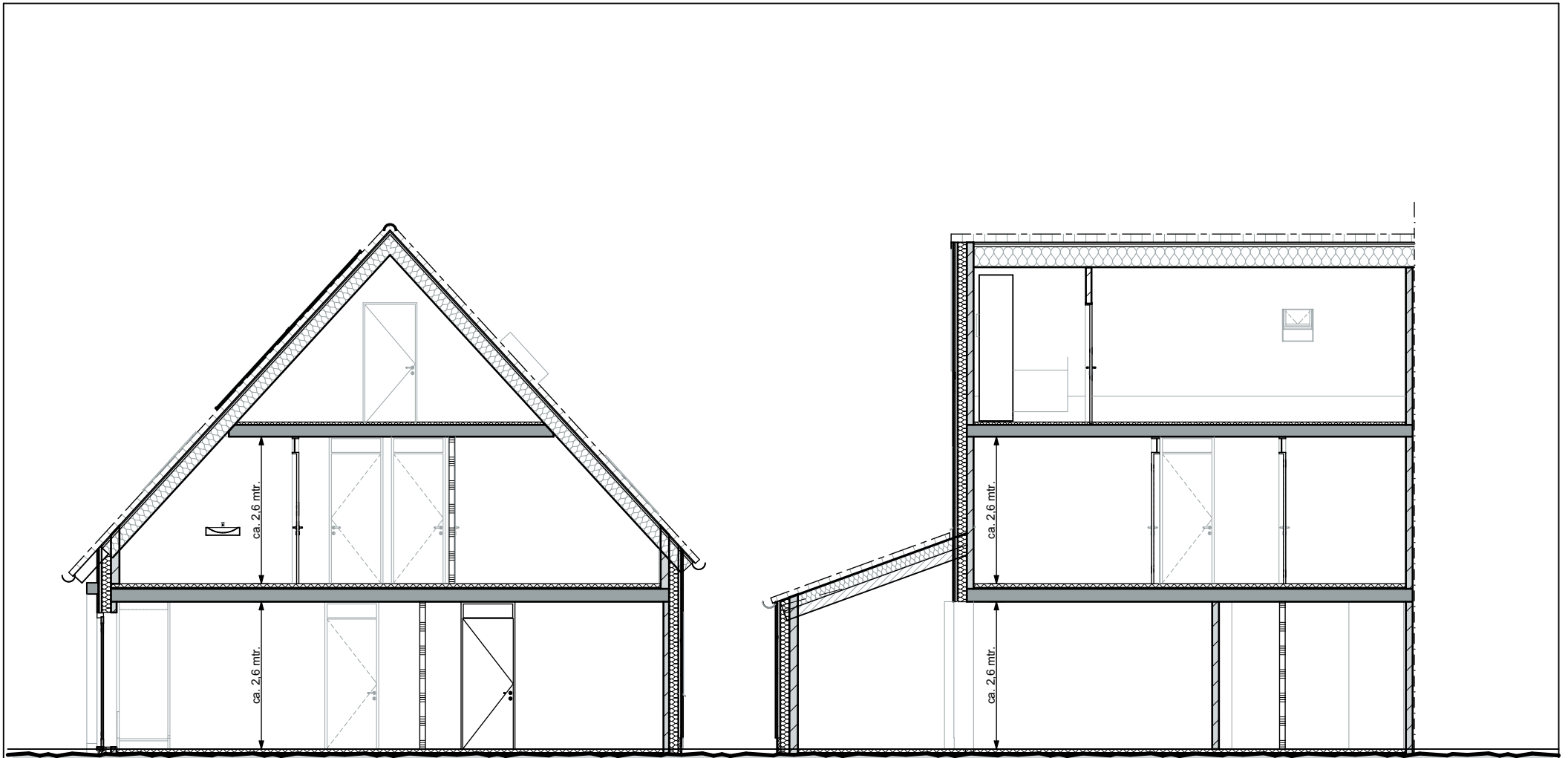
VOORGEVEL

ACHTERGEVEL



RECHTER ZIJGEVEL
KARSCHOP

VOORGEVEL
KARSCHOP



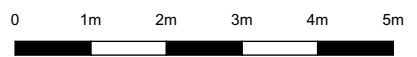
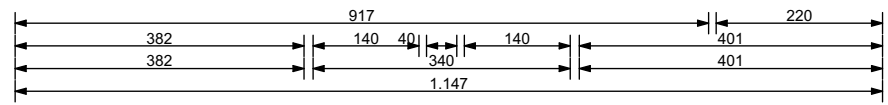
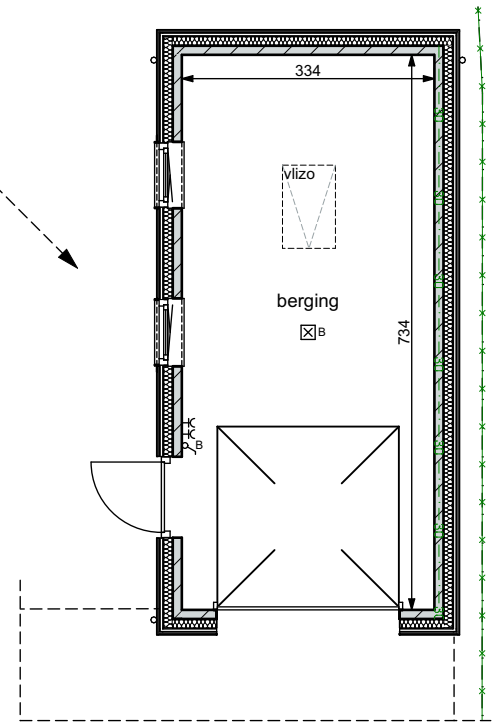
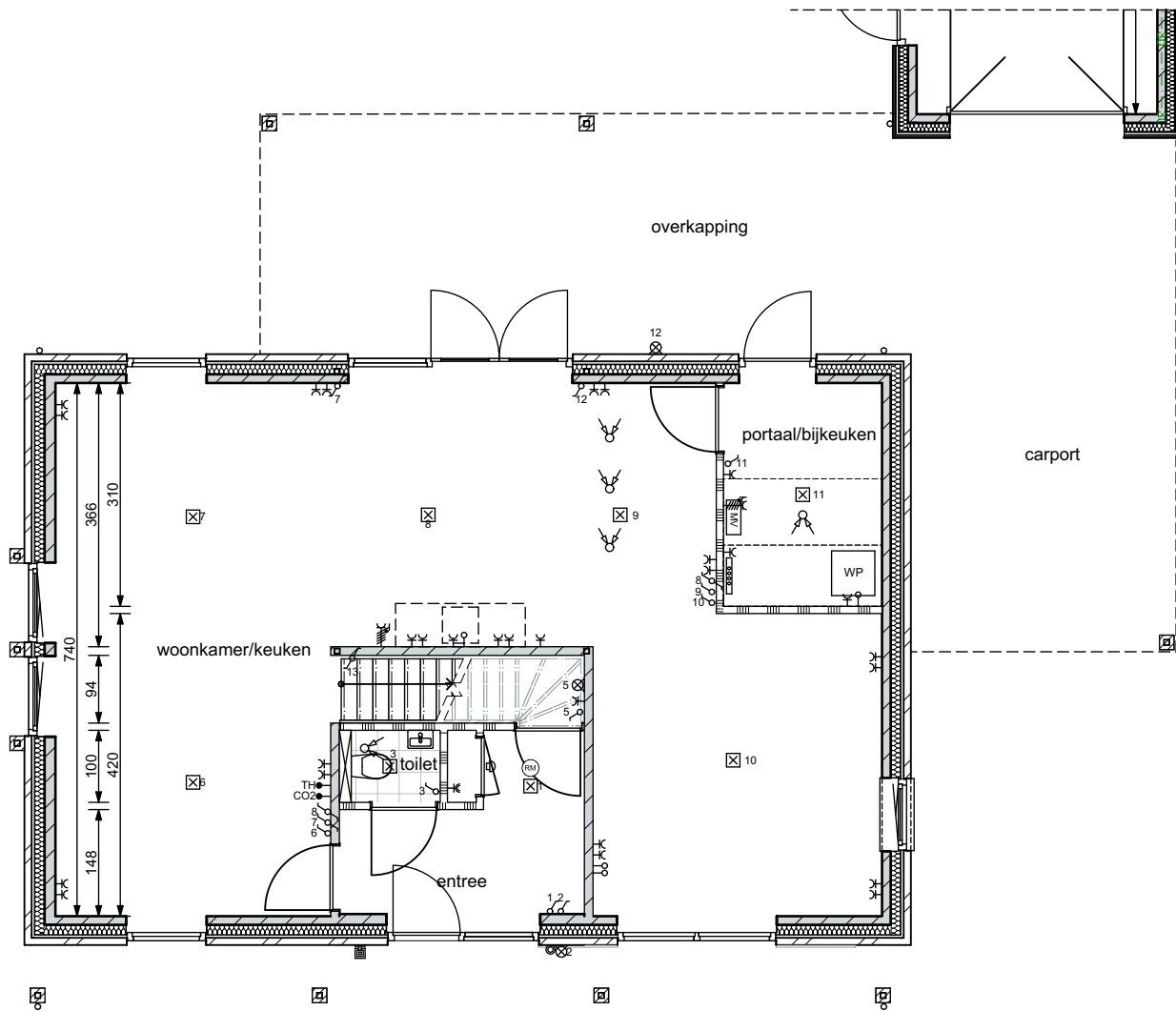
DOORSNEDE KAVEL 7

DOORSNEDE KAVEL 7

VK-18
Kavel 7; doorsnede
13 april 2026

vanGisbergen
gewoon goed.

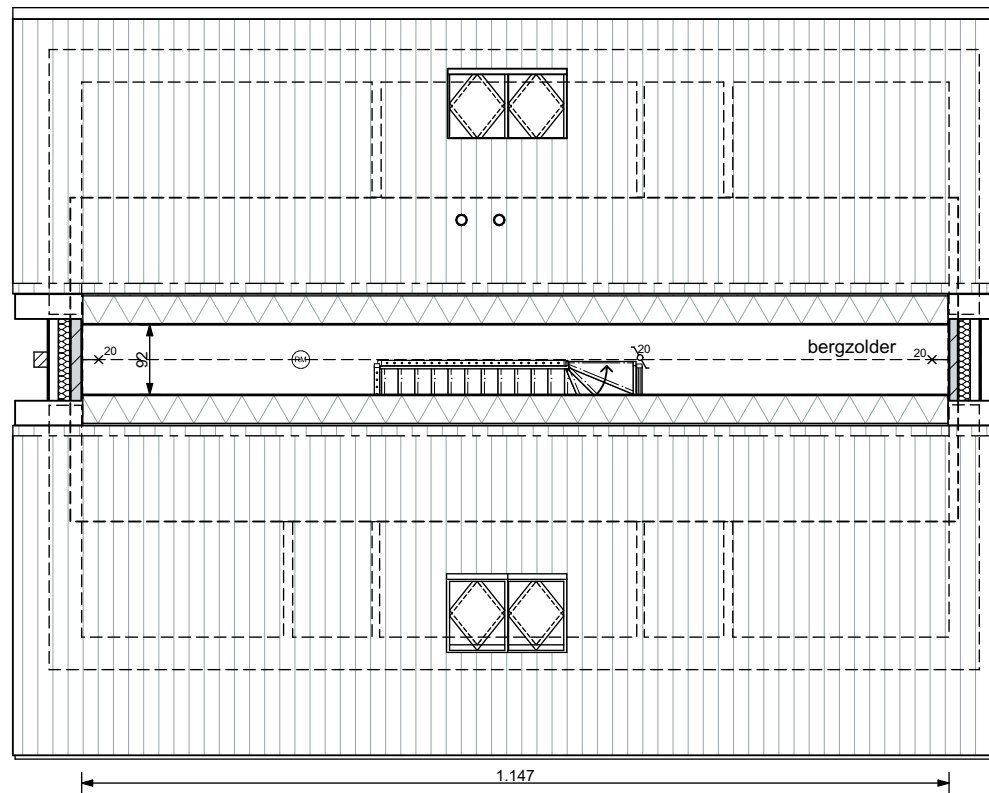
geWOON
architecten



VK-19
 Kavel 12; begane grond
 13 april 2026

vanGisbergen
 gewoon goed.

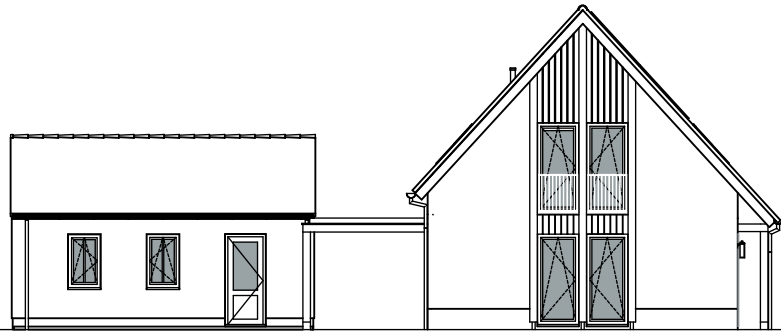
geWOON
 architecten



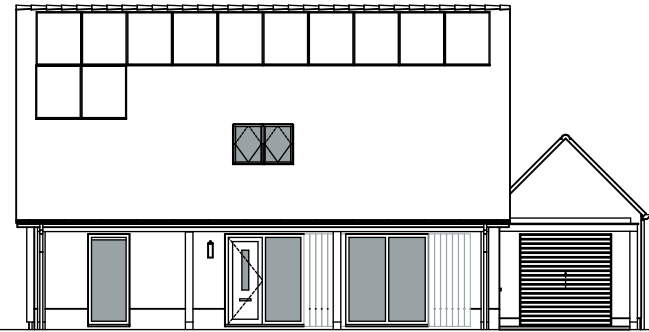
VK-21
 Kavel 12; tweede verdieping
 13 april 2026

vanGisbergen
 gewoon goed.

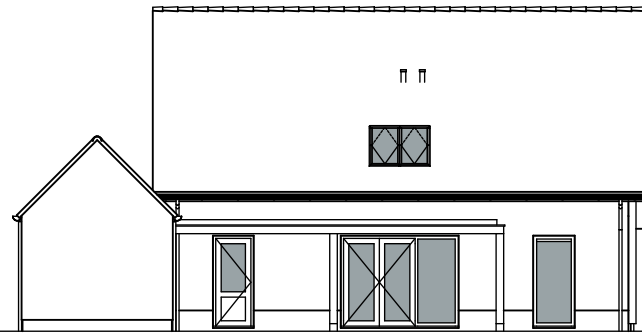
geWOON
 architecten



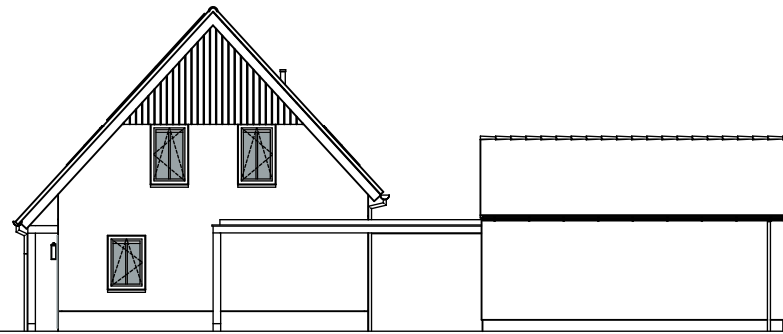
LINKER ZIJGEVEL



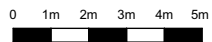
VOORGEVEL



ACHTERGEVEL



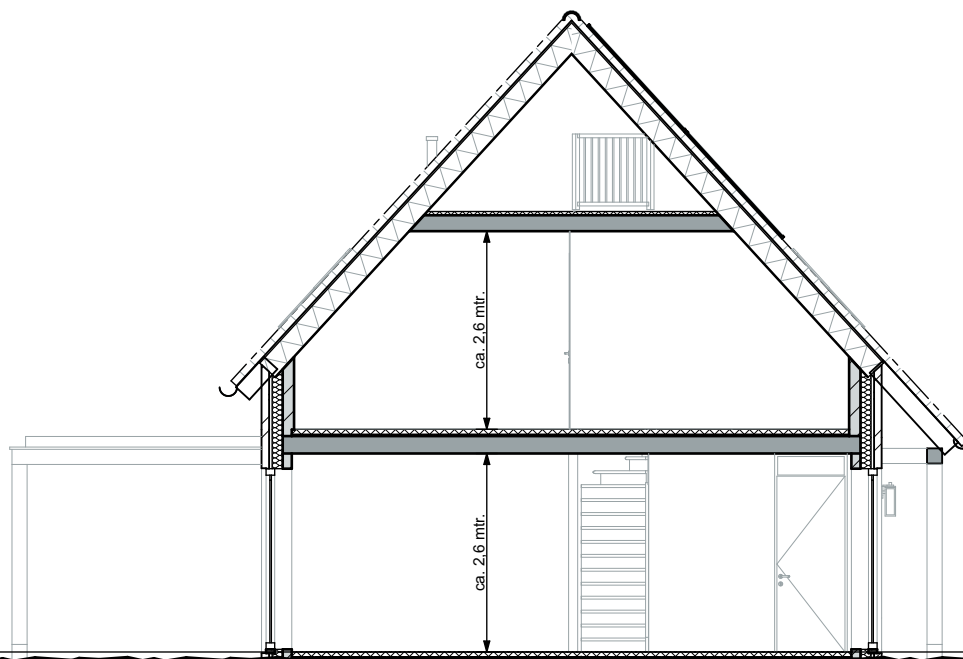
RECHTER ZIJGEVEL



VK-22
Kavel 12; gevelaanzichten
13 april 2026

vanGisbergen
gewoon goed.

geWOON
architecten



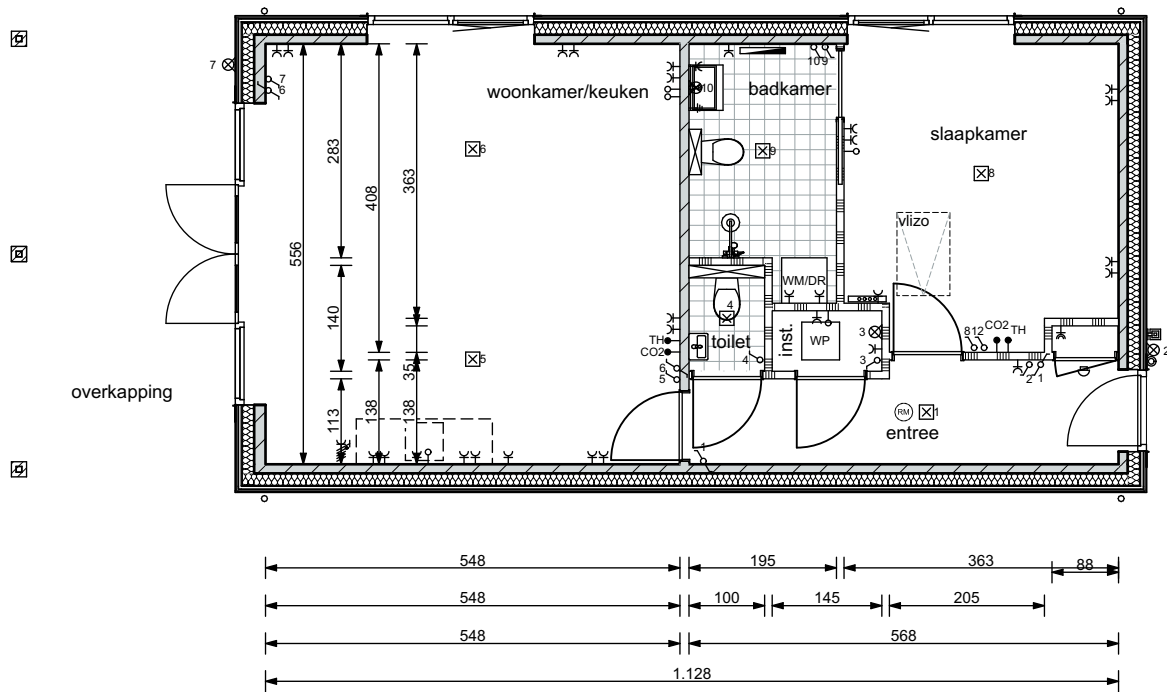
DOORSNEDE KAVEL 12



VK-23
Kavel 12; doorsnede
13 april 2026

vanGisbergen
gewoon goed.

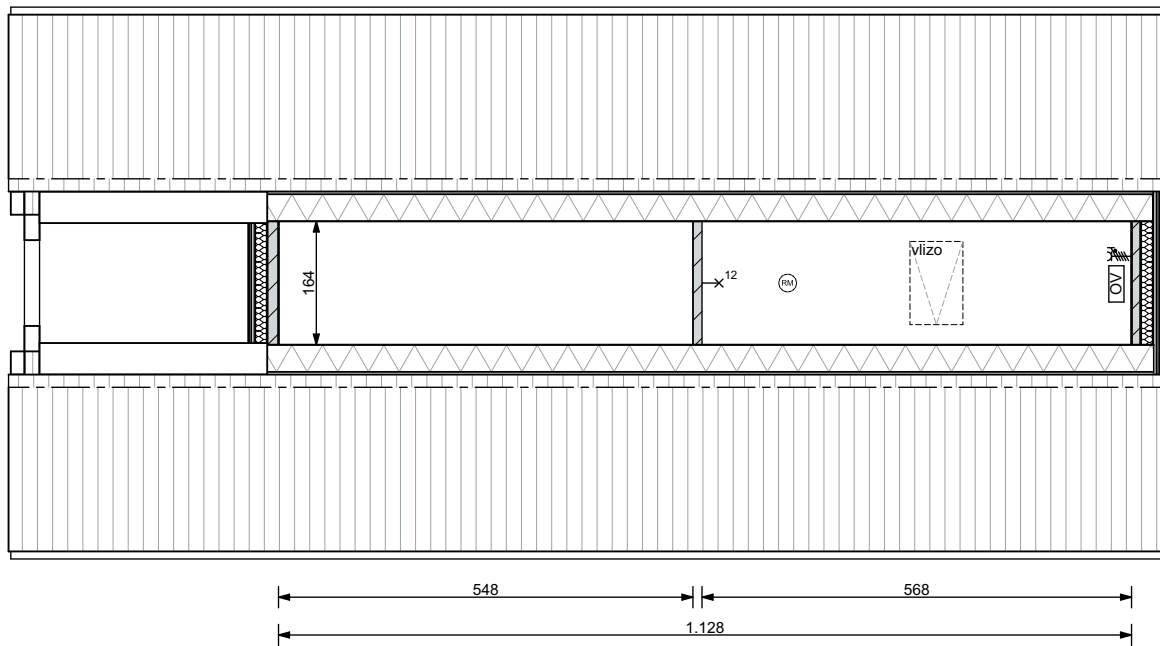
geWOON
architecten



VK-24
 Mantelzorg; begane grond
 23 april 2026

vanGisbergen
 gewoon goed.

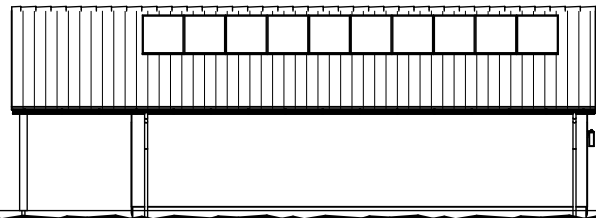
geWOON
 architecten



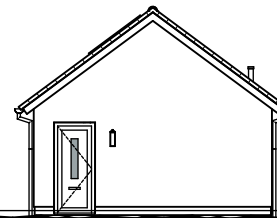
VK-25
 Mantelzorg; eerste verdieping
 23 april 2026

vanGisbergen
 gewoon goed.

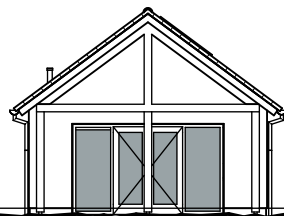
geWOON
 architecten



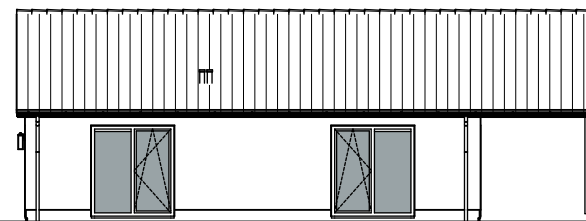
LINKER ZIJGEVEL



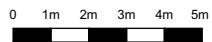
VOORGEVEL



ACHTERGEVEL



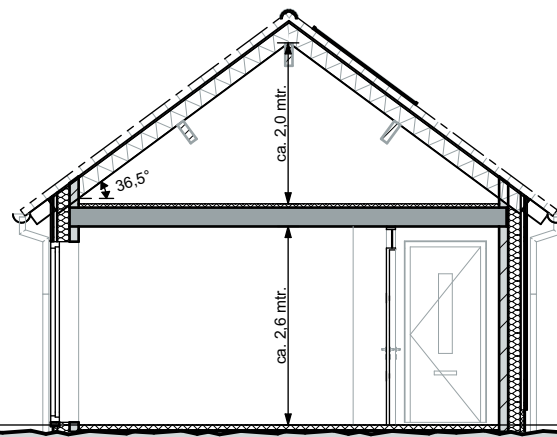
RECHTER ZIJGEVEL



VK-26
Mantelzorg; gevelaanzichten
23 april 2026

vanGisbergen
gewoon goed.

geWOON
architecten



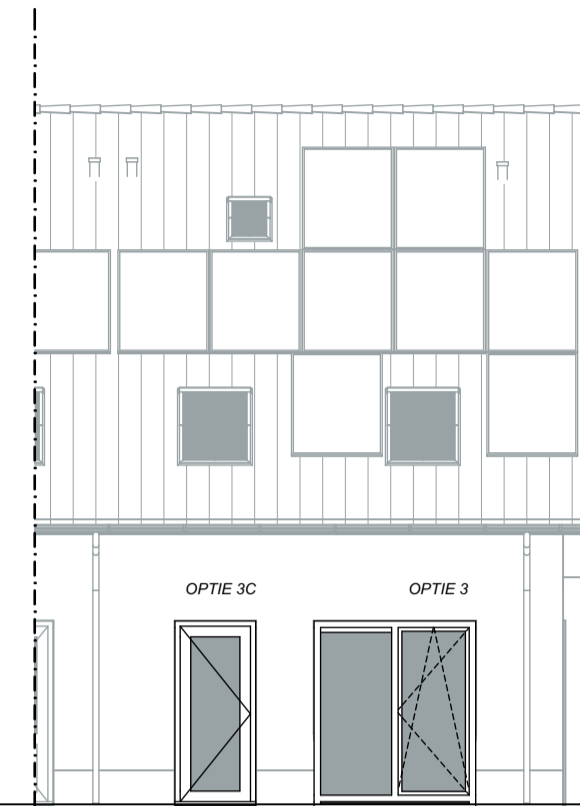
DOORSNEDE MANTELZORGWONING



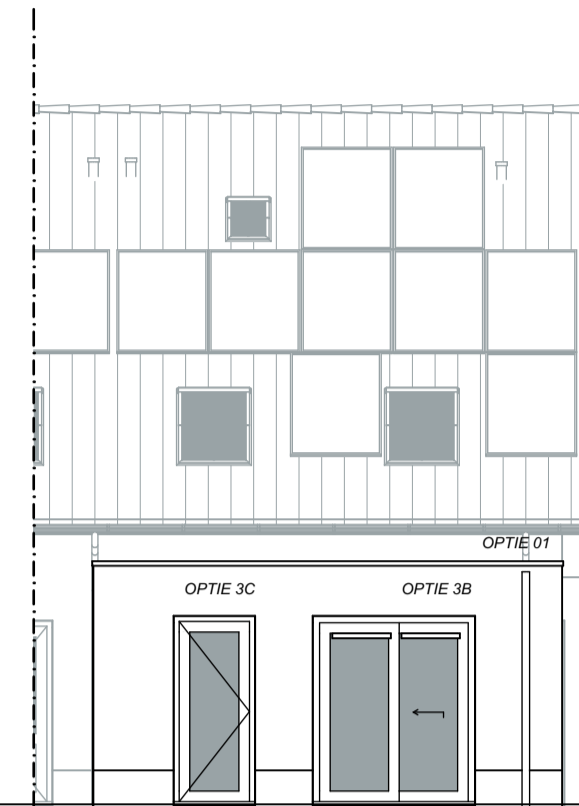
VK-27
Mantelzorg; doorsnede
23 april 2026

vanGisbergen
gewoon goed.

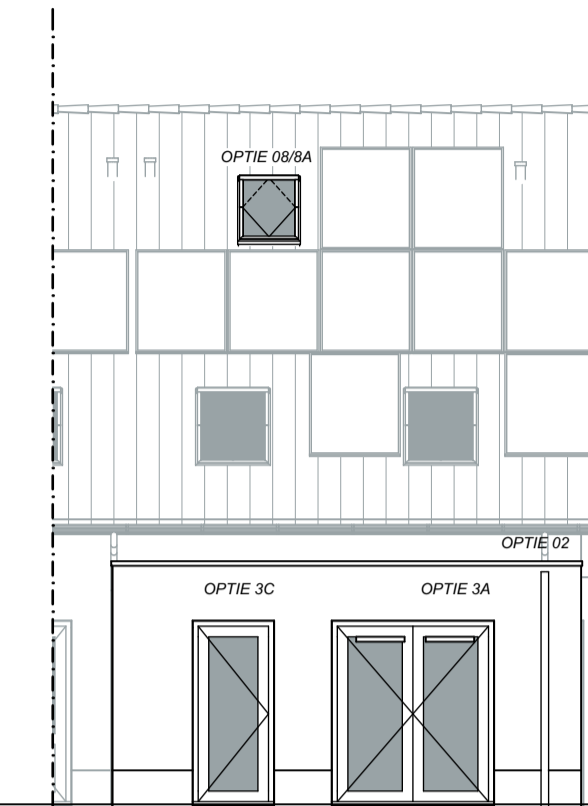
geWOON
architecten



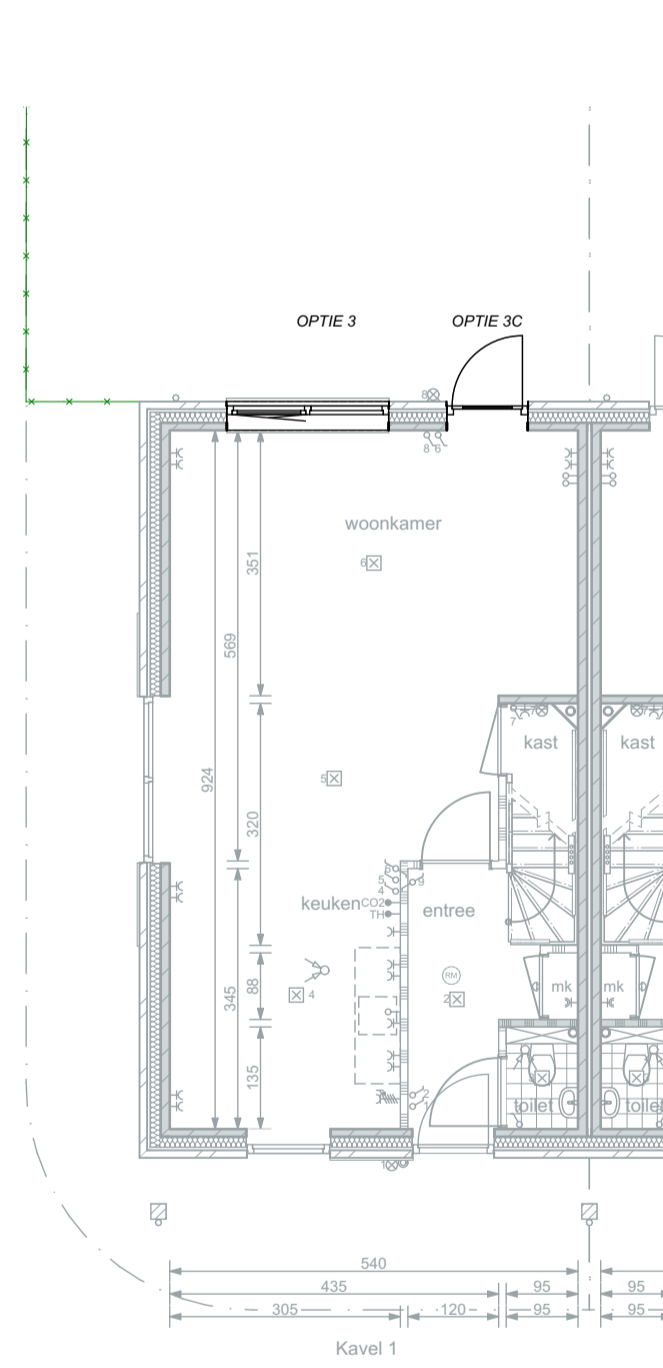
ACHTERGEVEL



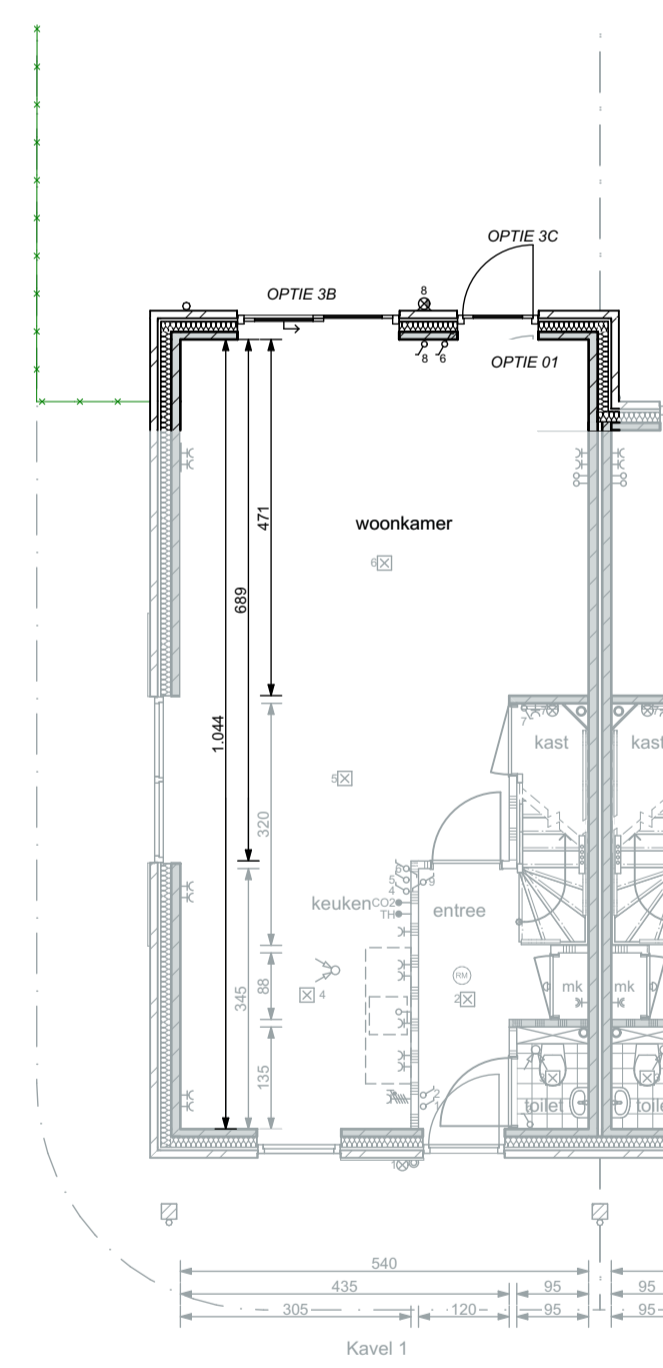
ACHTERGEVEL



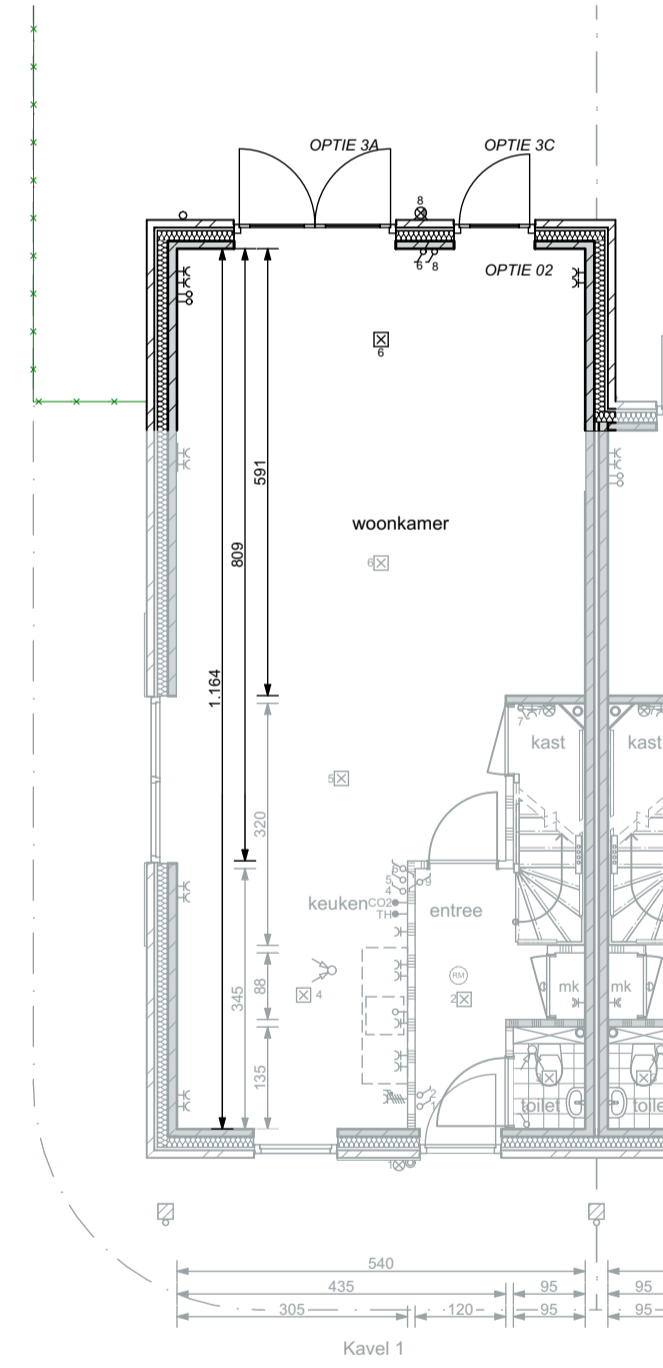
ACHTERGEVEL



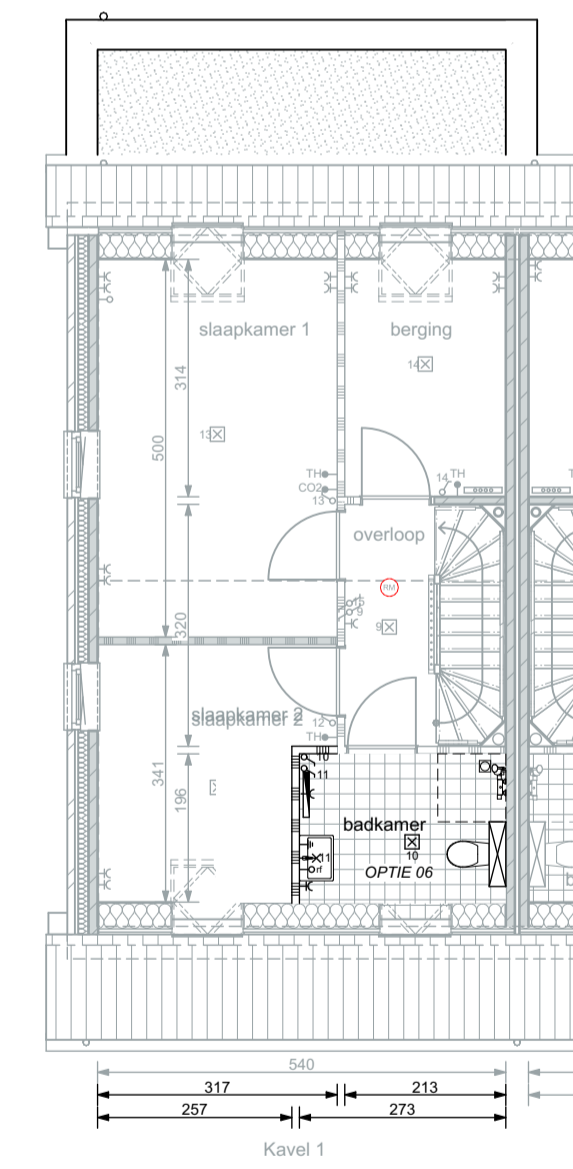
PLATTEGROND; WONING
BEGANE GROND



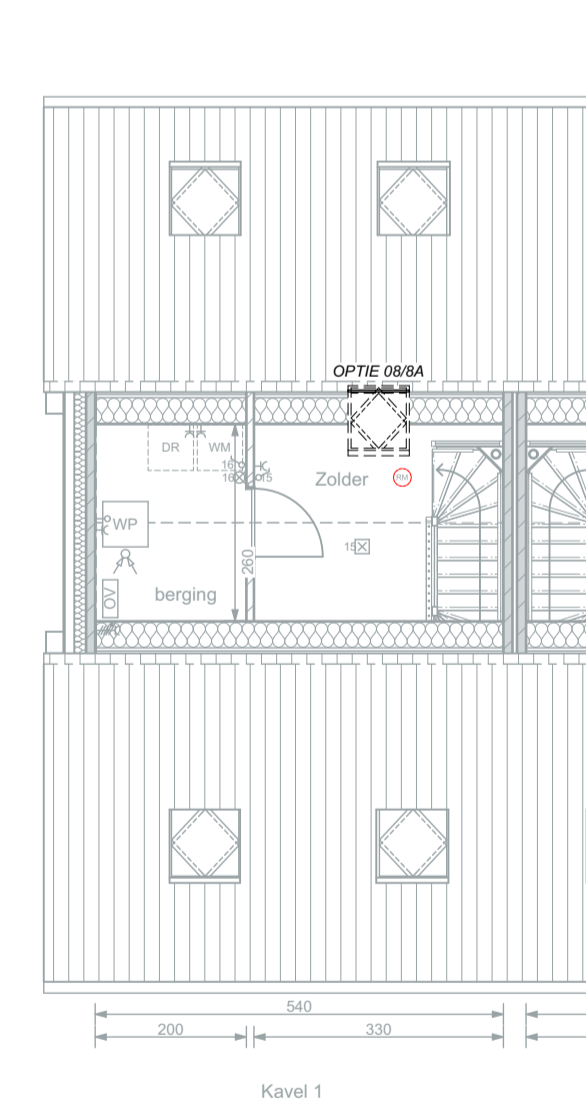
PLATTEGROND; WONING
BEGANE GROND



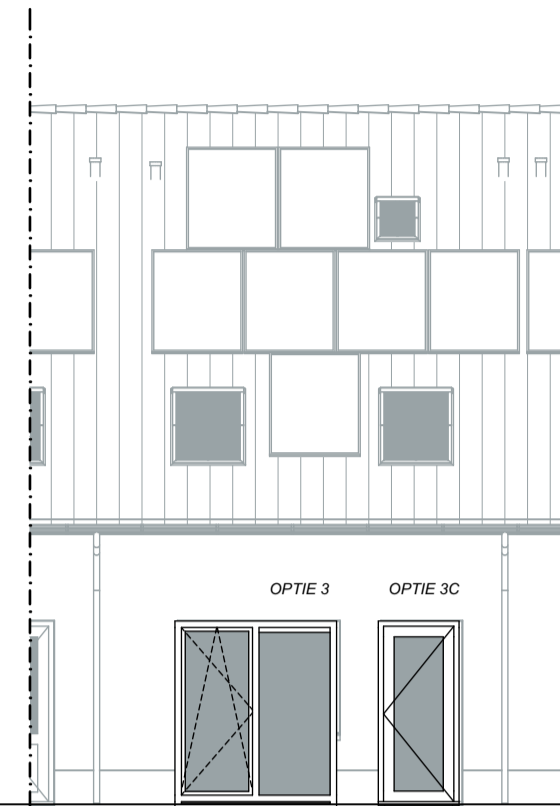
PLATTEGROND; WONING
BEGANE GROND



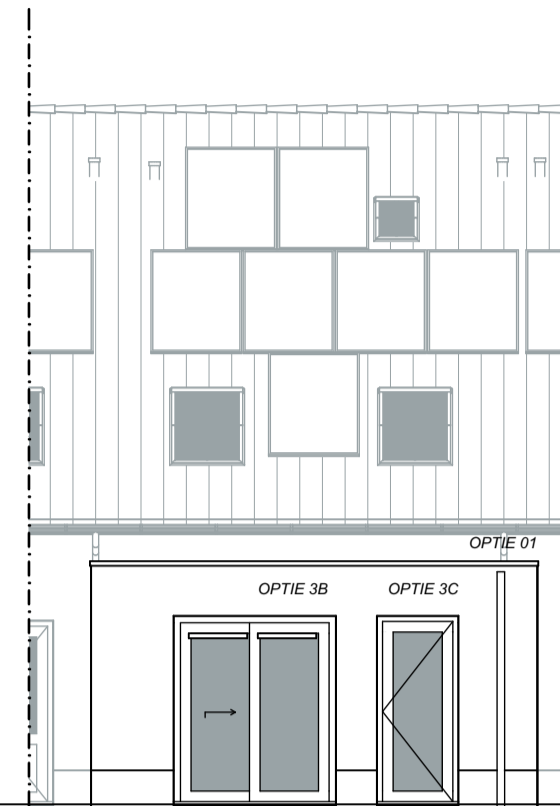
PLATTEGROND; WONING
EERSTE VERDIEPING



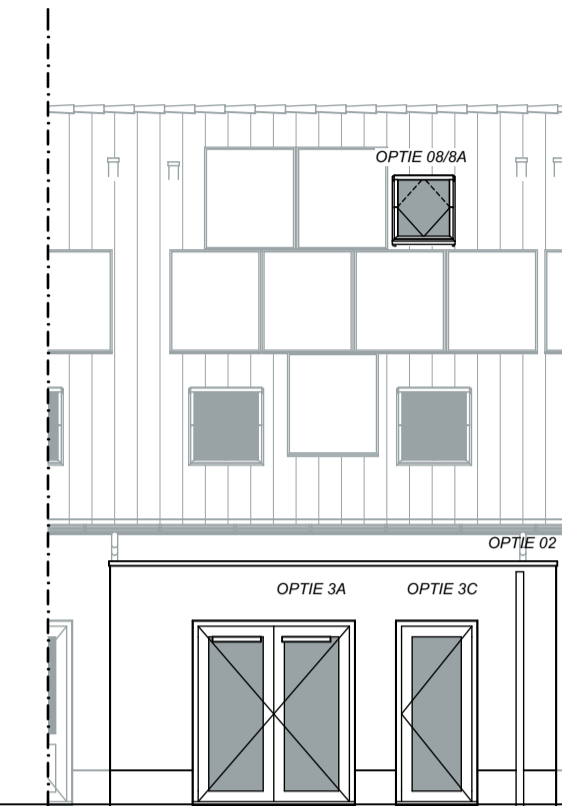
PLATTEGROND; WONING
TWEDE VERDIEPING



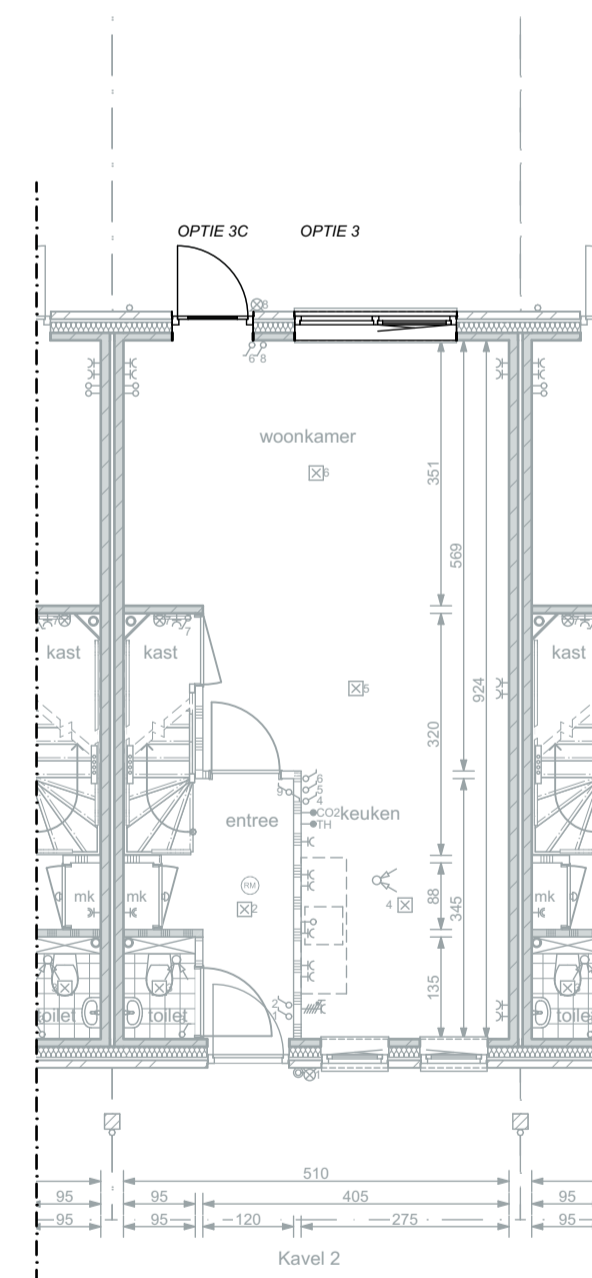
ACHTERGEVEL



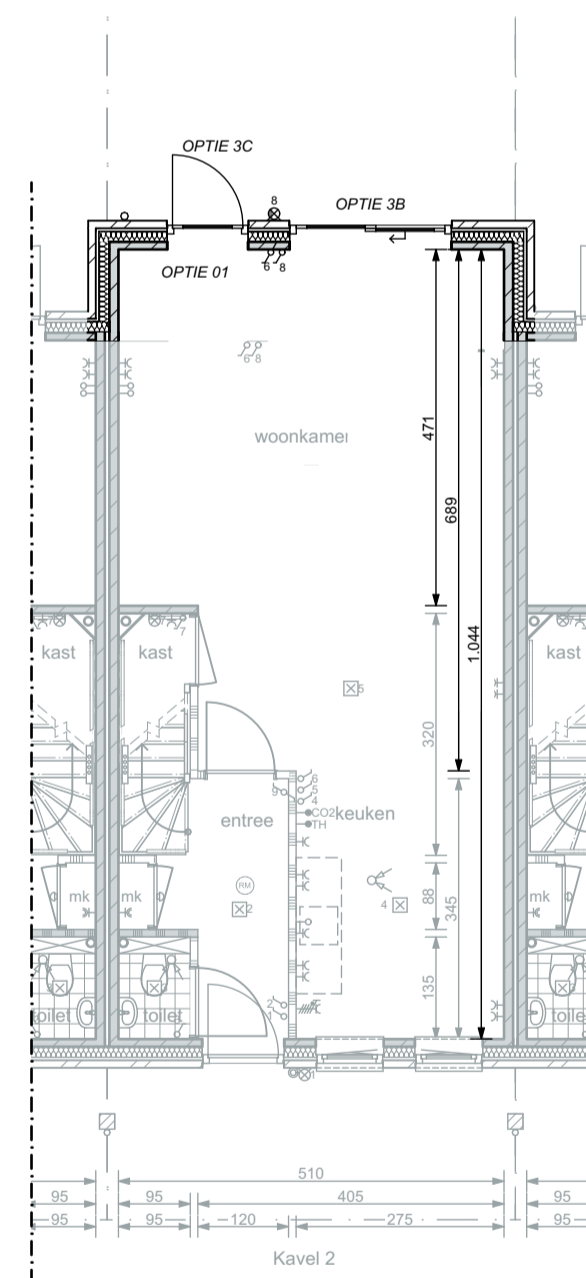
ACHTERGEVEL



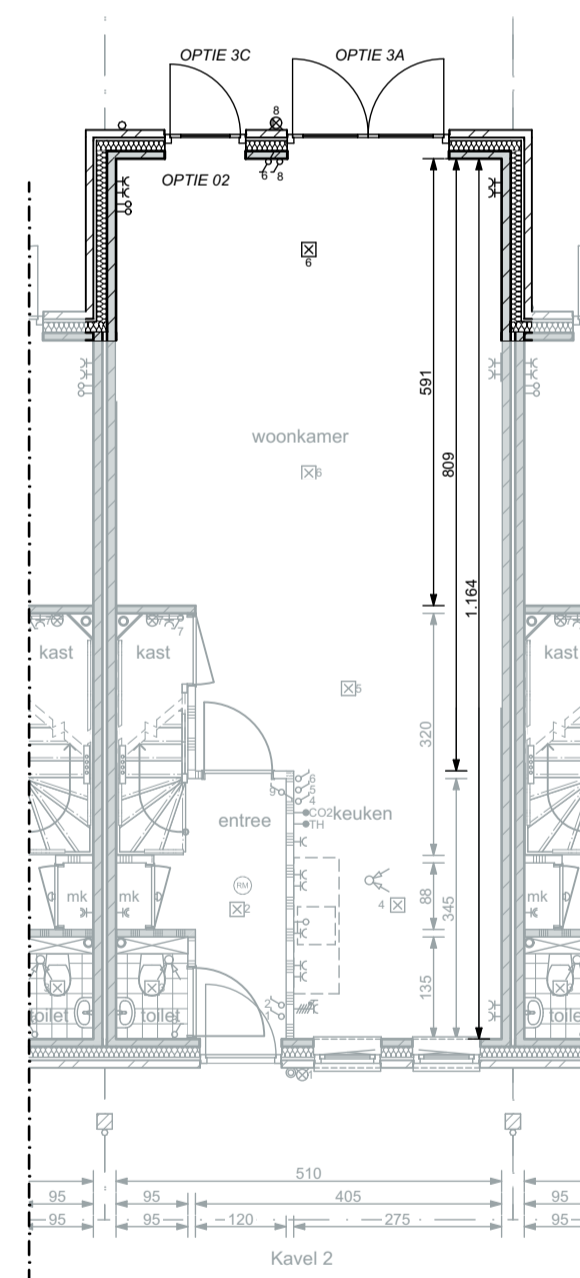
ACHTERGEVEL



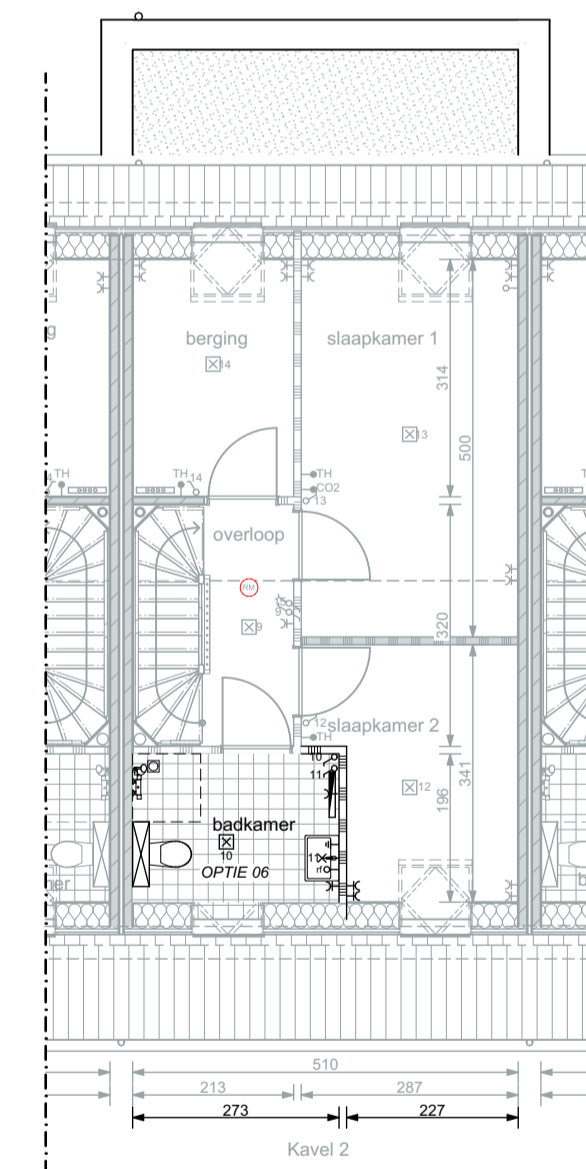
PLATTEGROND; WONING
BEGANE GROND



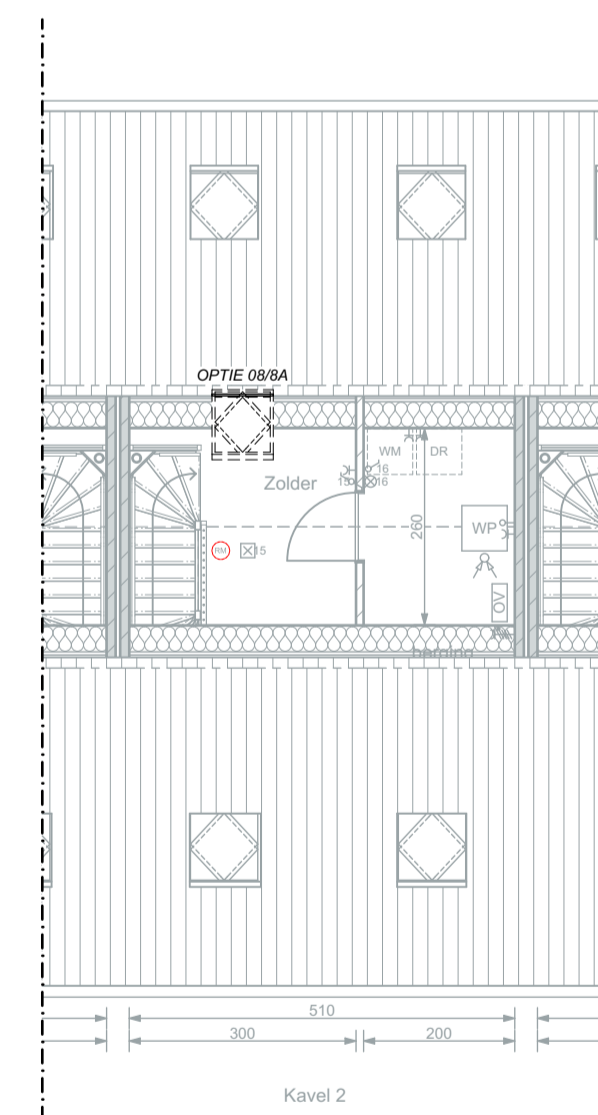
PLATTEGROND; WONING
BEGANE GROND



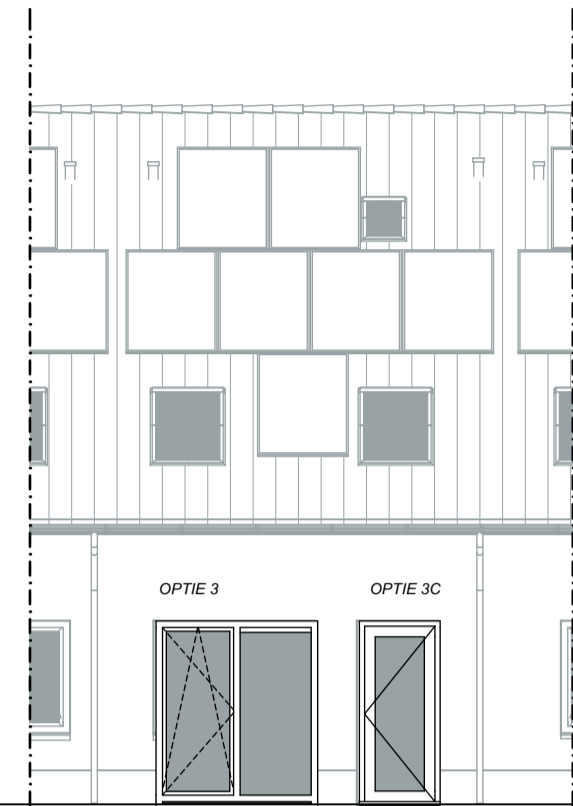
PLATTEGROND; WONING
BEGANE GROND



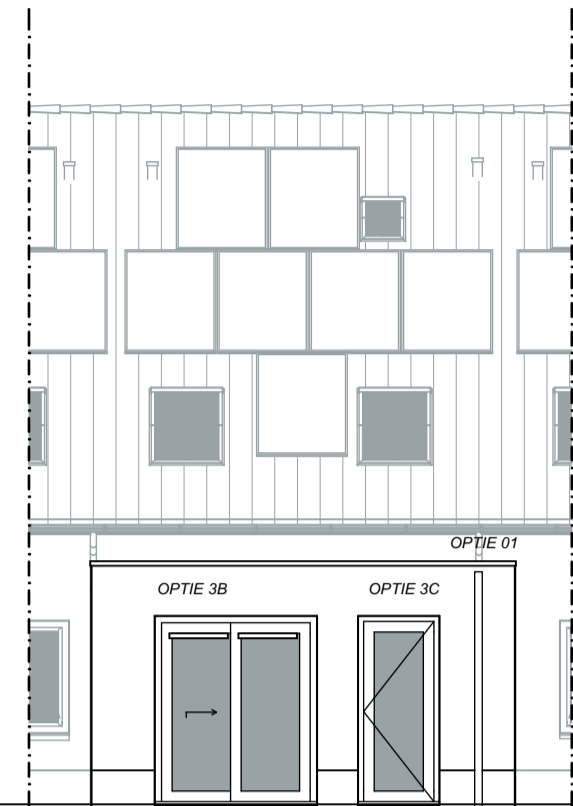
PLATTEGROND; WONING
EERSTE VERDIEPING



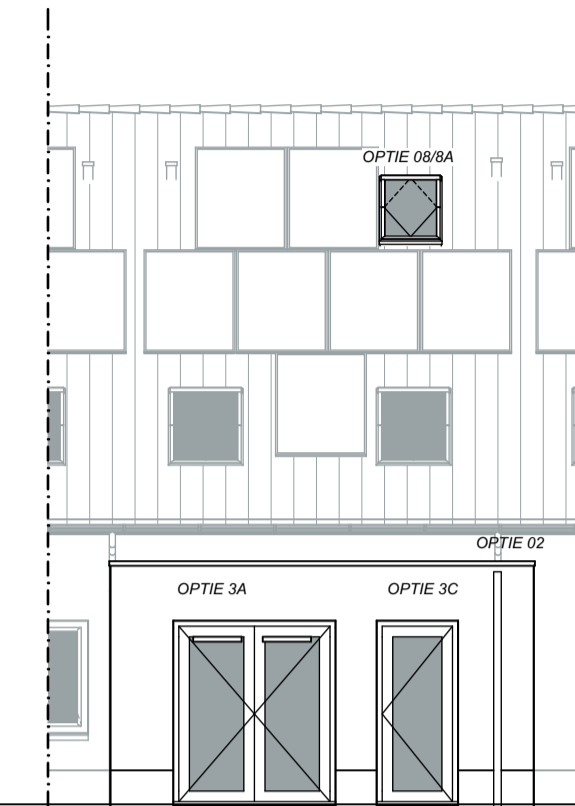
PLATTEGROND; WONING
TWEDE VERDIEPING



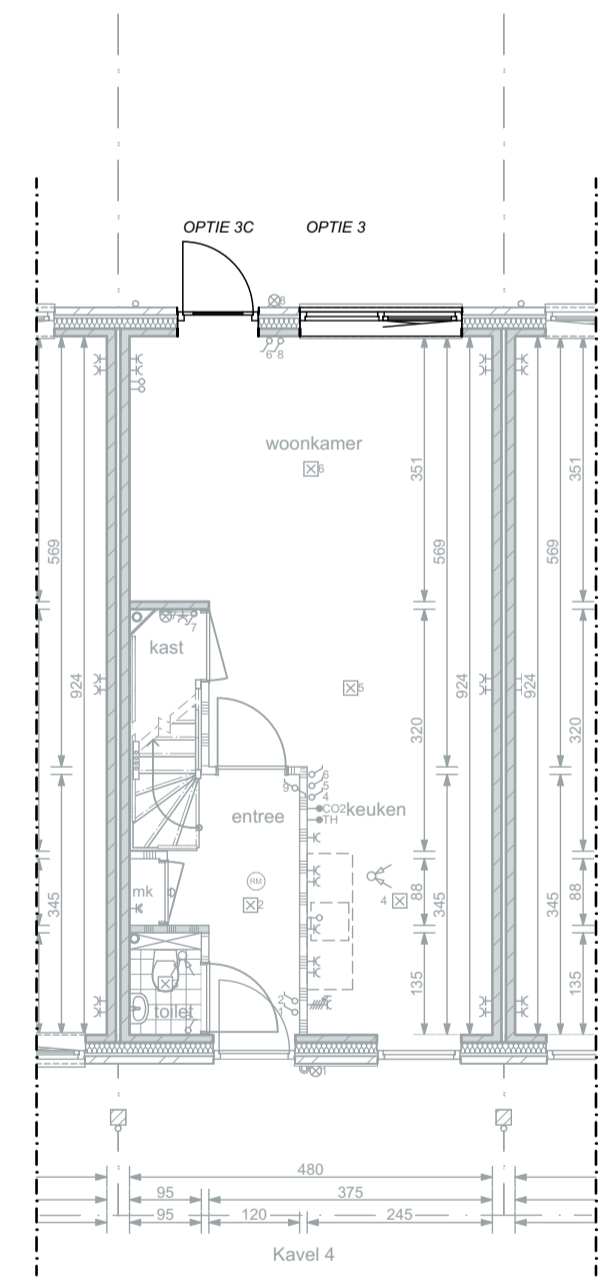
ACHTERGEVEL



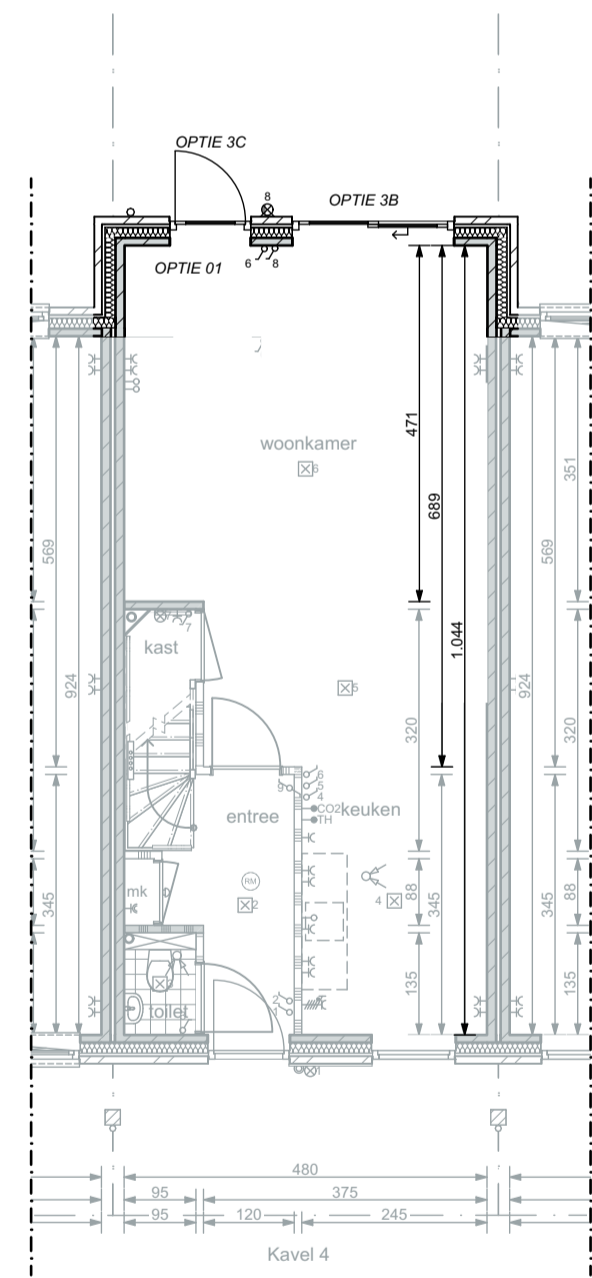
ACHTERGEVEL



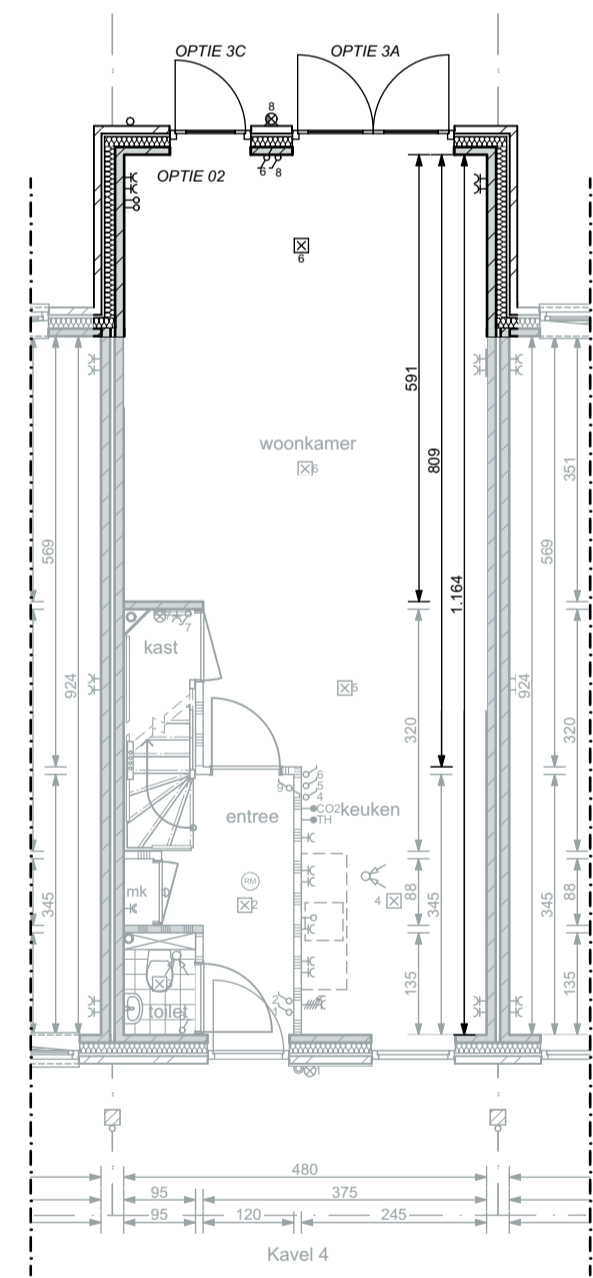
ACHTERGEVEL



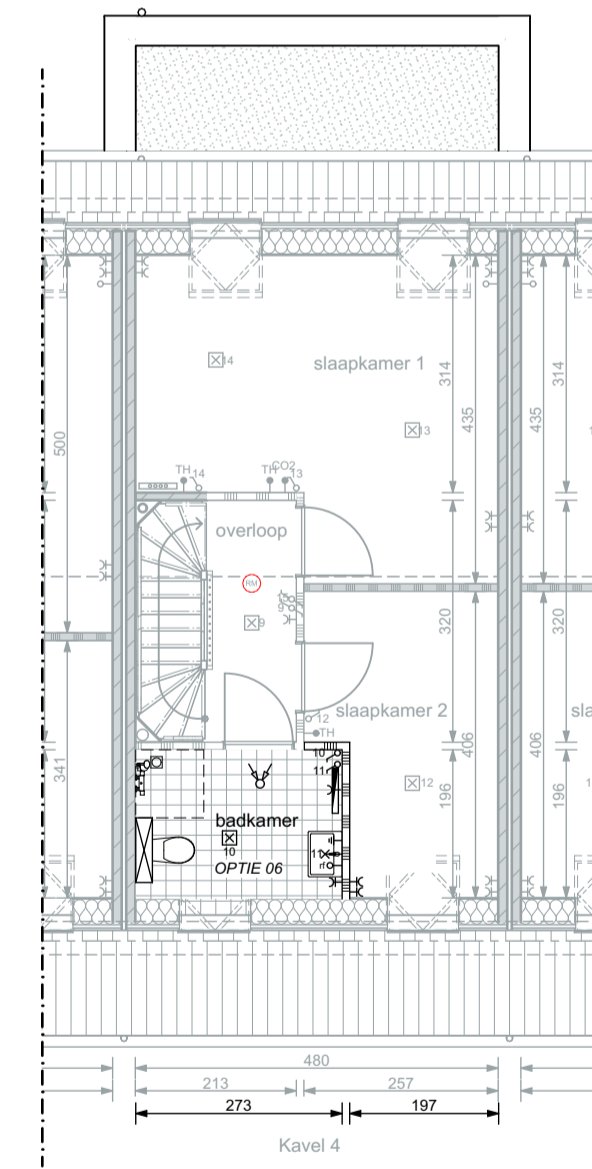
PLATTEGROND; WONING
BEGANE GROND



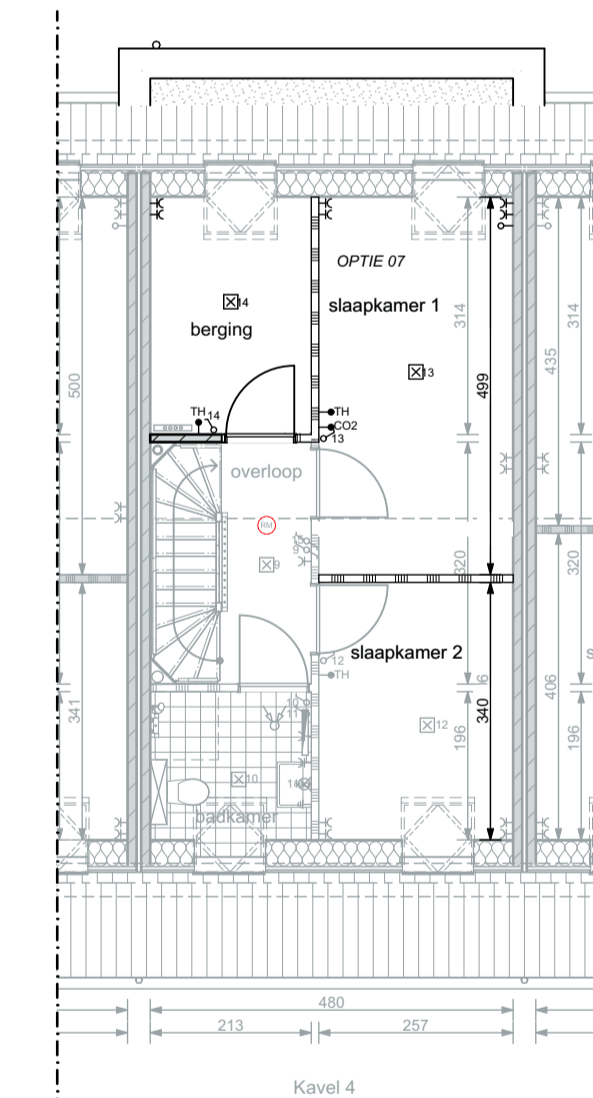
PLATTEGROND; WONING
BEGANE GROND



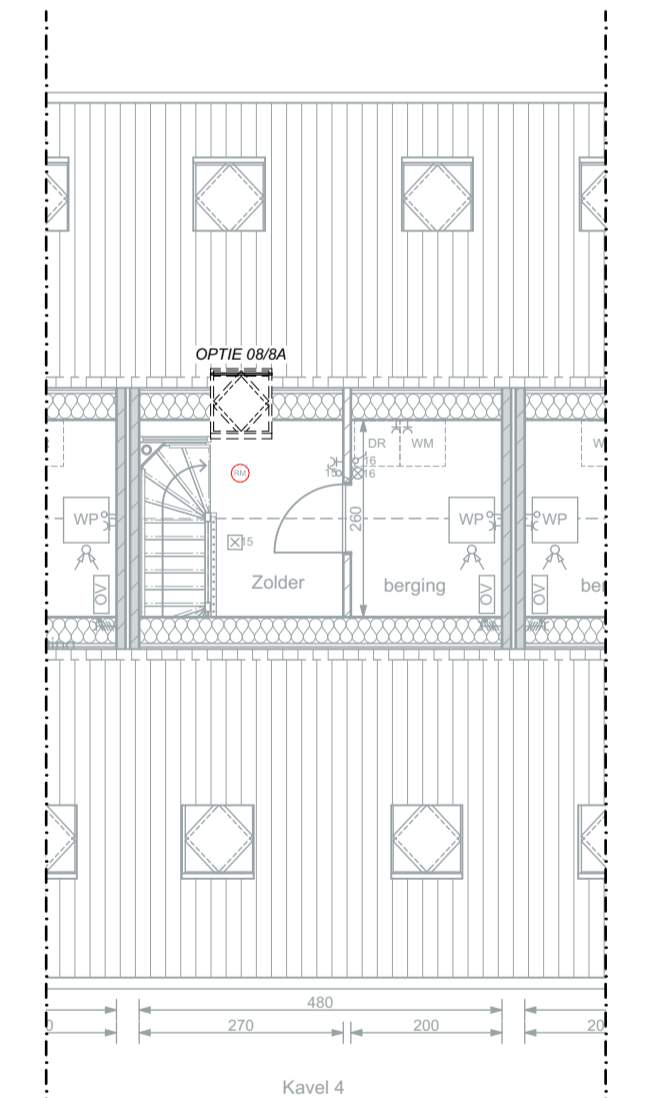
PLATTEGROND; WONING
BEGANE GROND



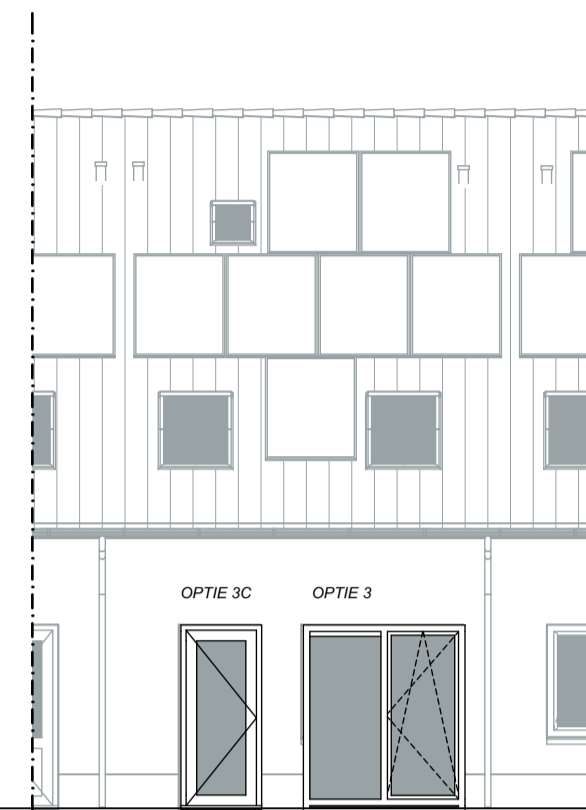
PLATTEGROND; WONING
EERSTE VERDIEPING



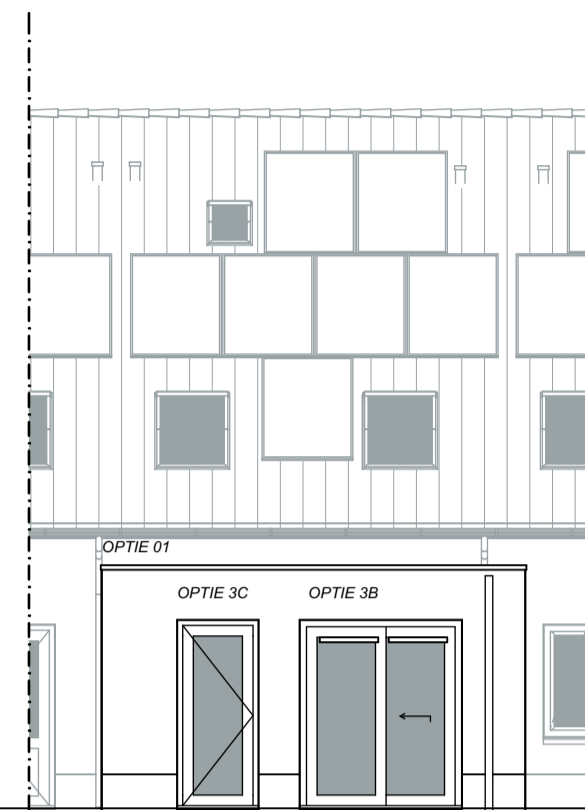
PLATTEGROND; WONING
EERSTE VERDIEPING



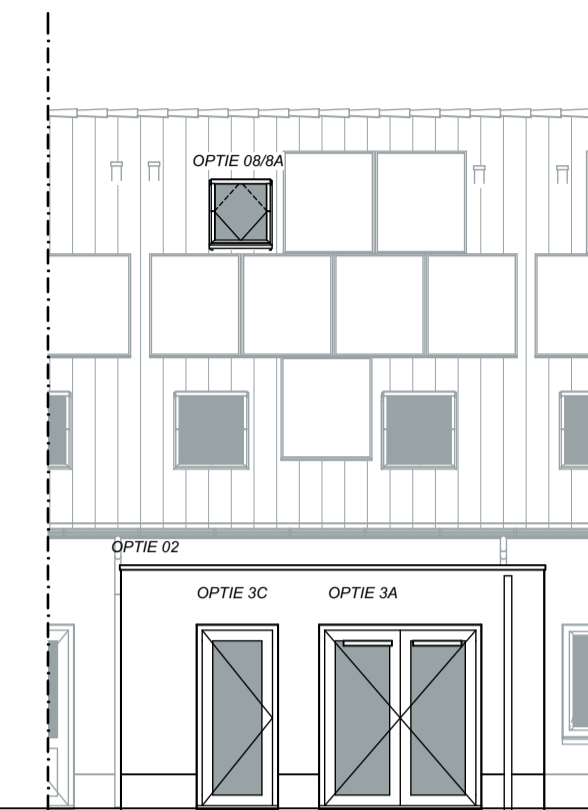
PLATTEGROND; WONING
TWEDE VERDIEPING



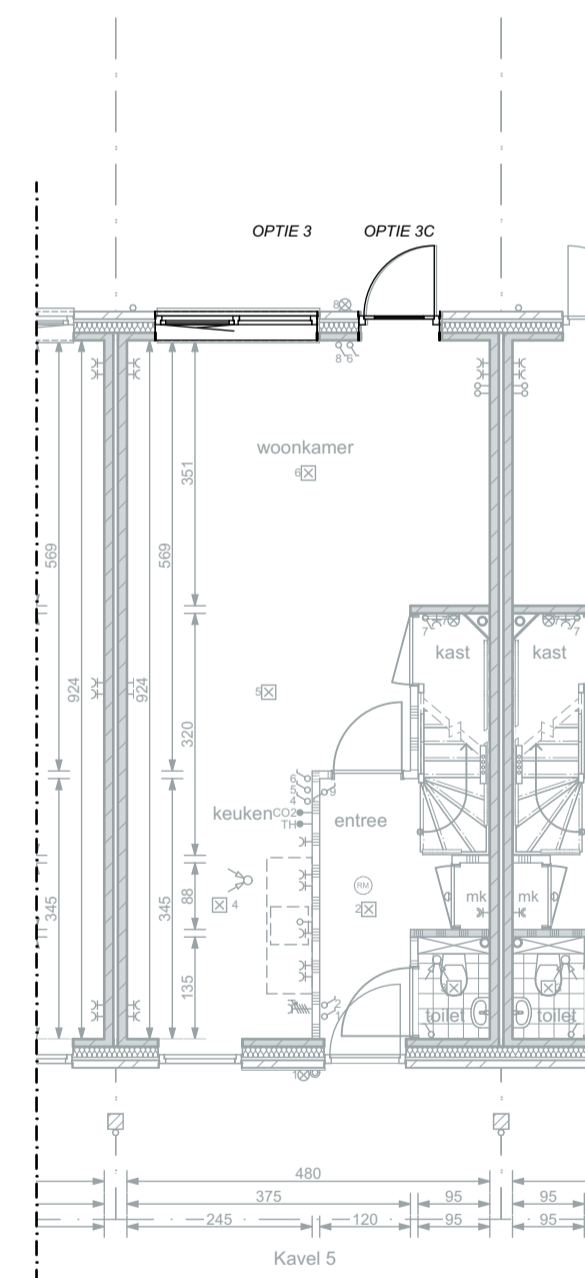
ACHTERGEVEL



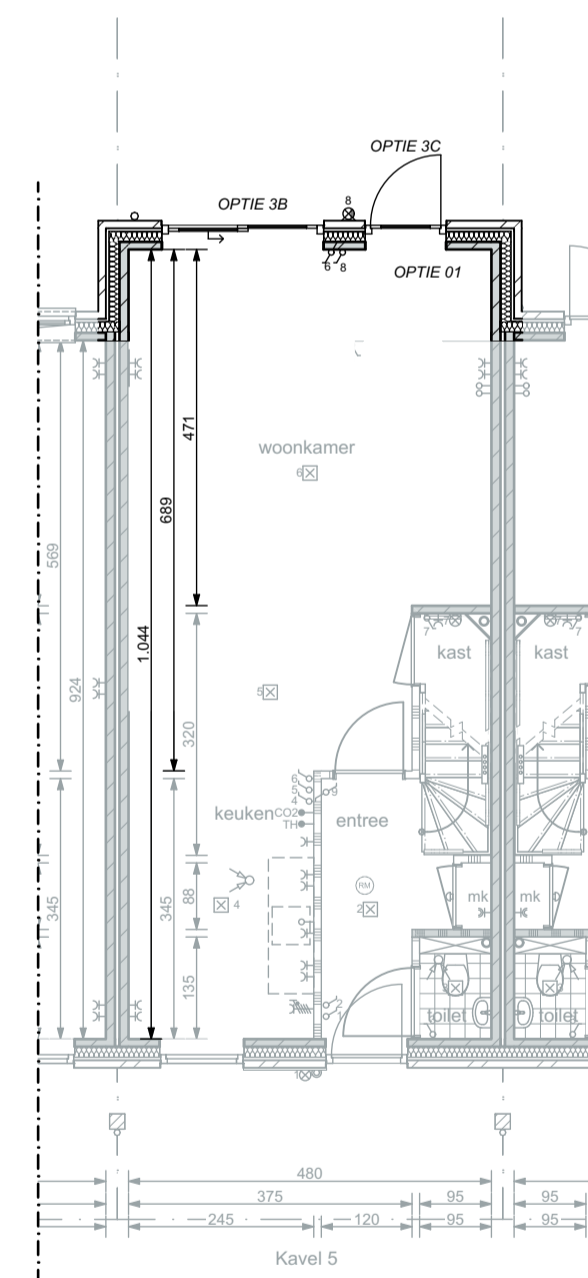
ACHTERGEVEL



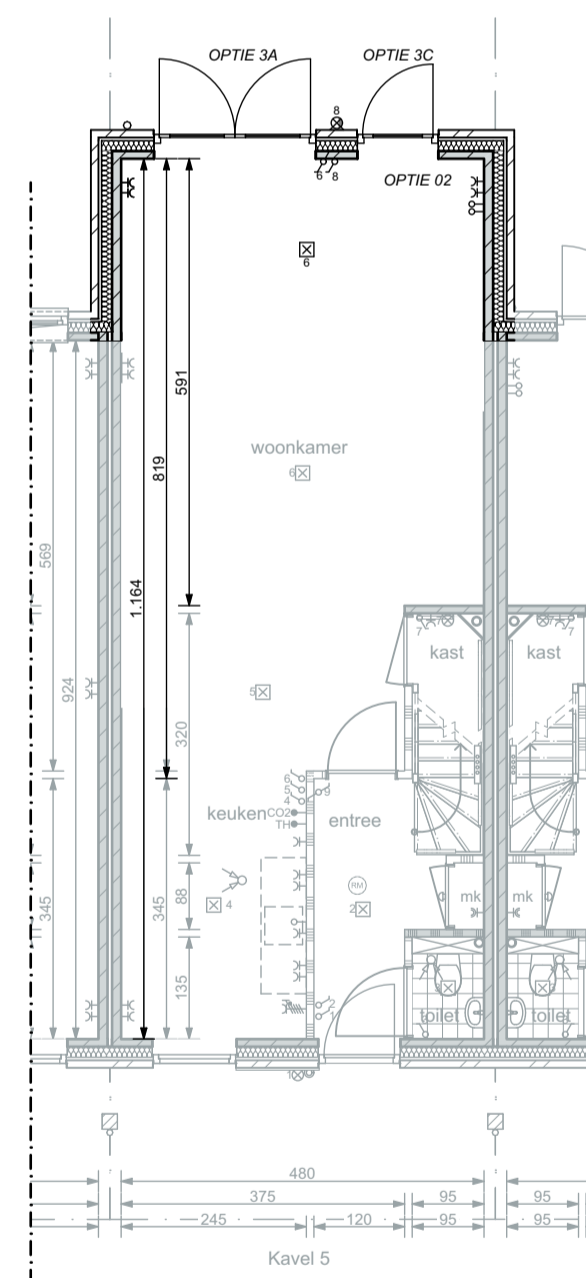
ACHTERGEVEL



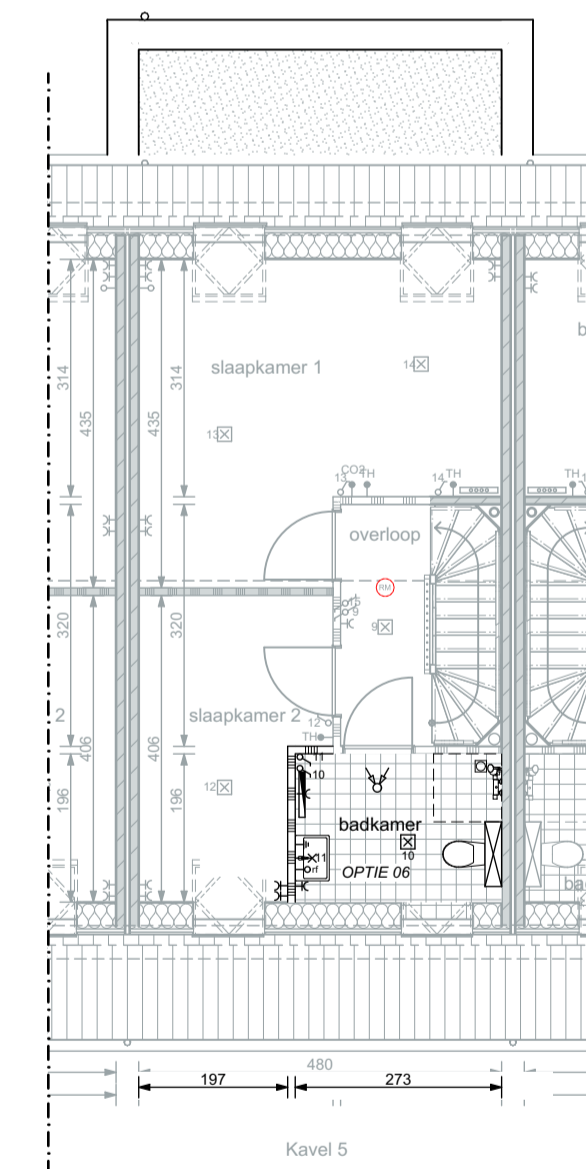
PLATTEGROND; WONING
BEGANE GROND



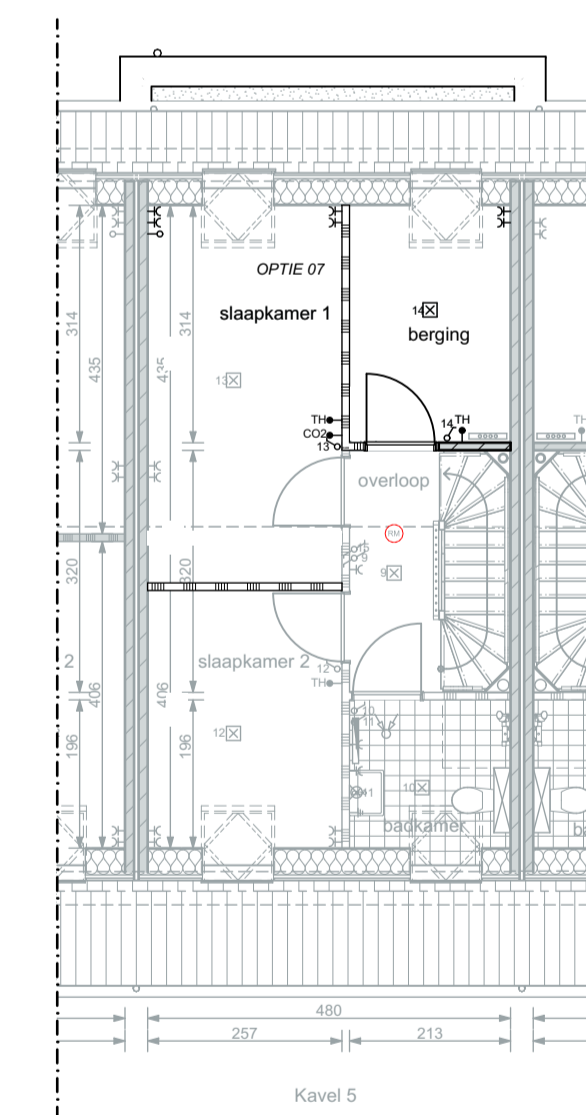
PLATTEGROND; WONING
BEGANE GROND



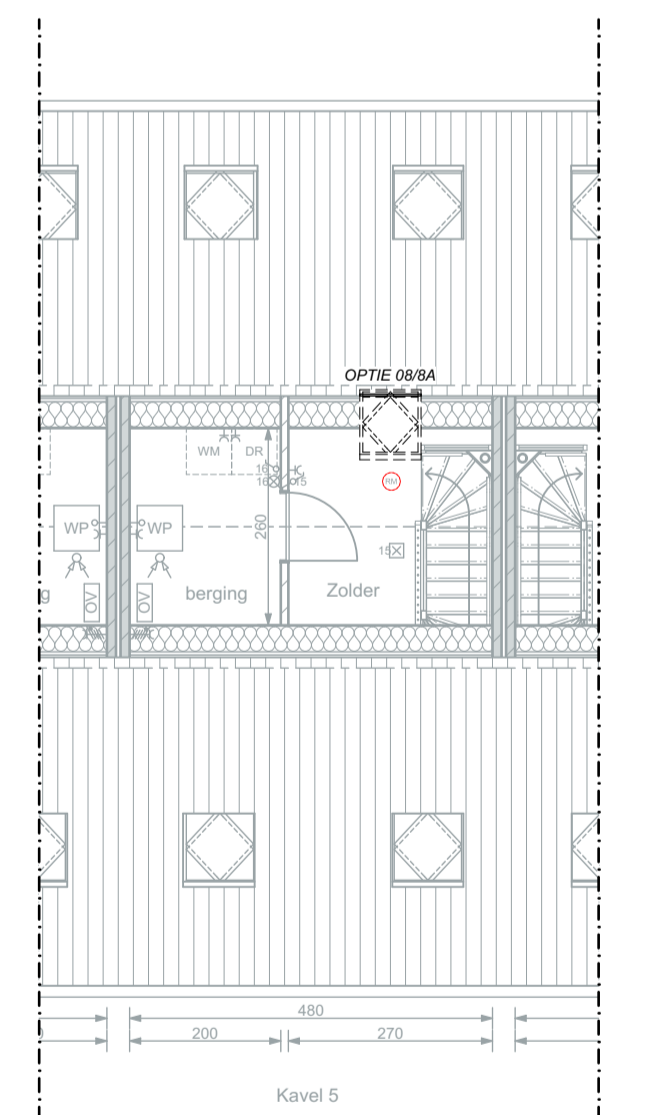
PLATTEGROND; WONING
BEGANE GROND



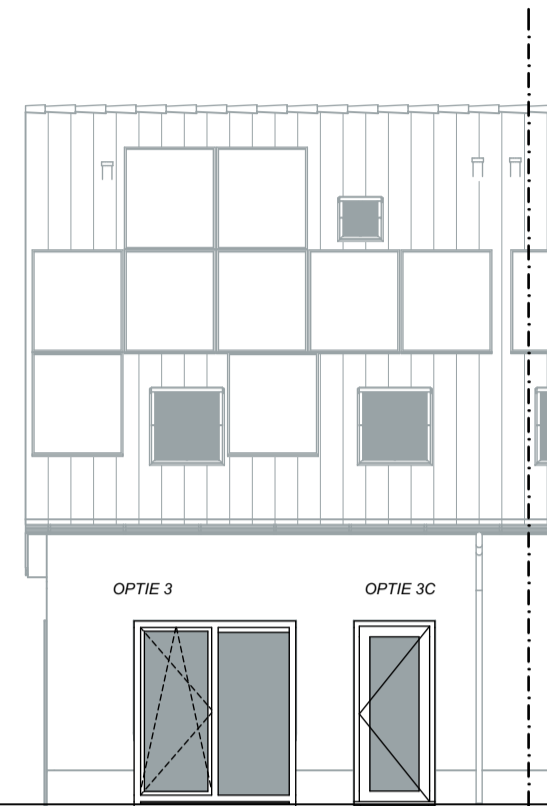
PLATTEGROND; WONING
EERSTE VERDIEPING



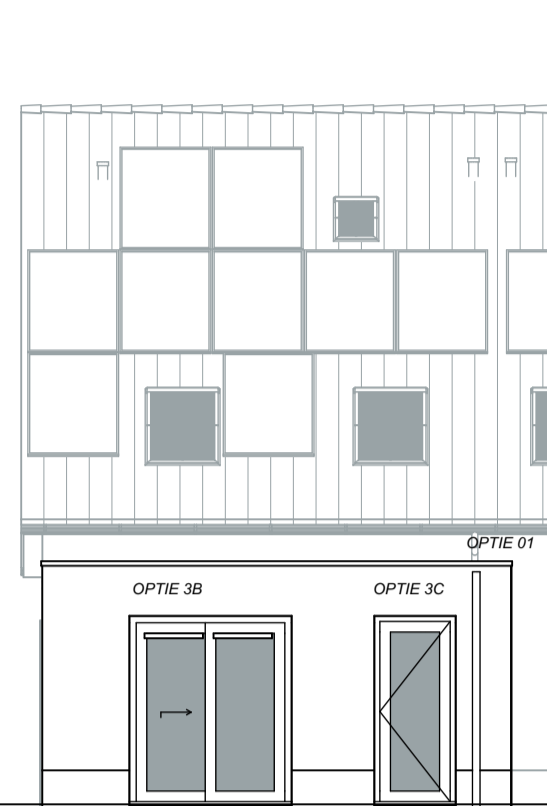
PLATTEGROND; WONING
EERSTE VERDIEPING



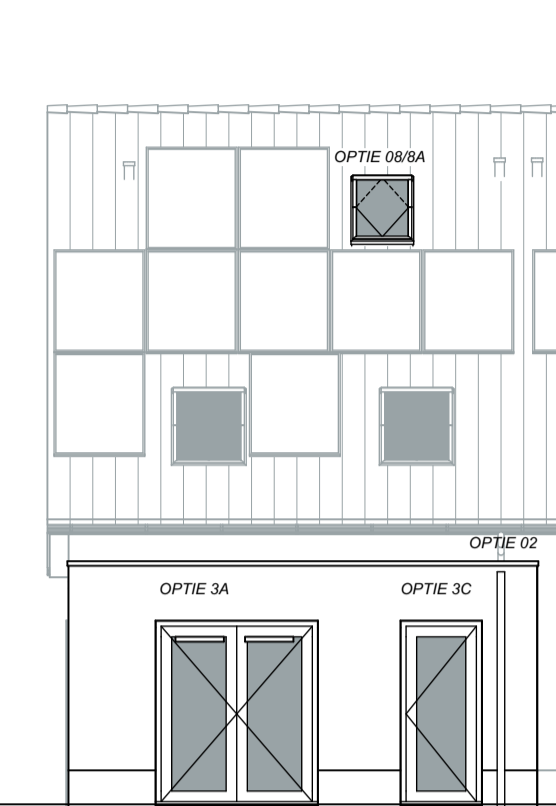
PLATTEGROND; WONING
TWEDE VERDIEPING



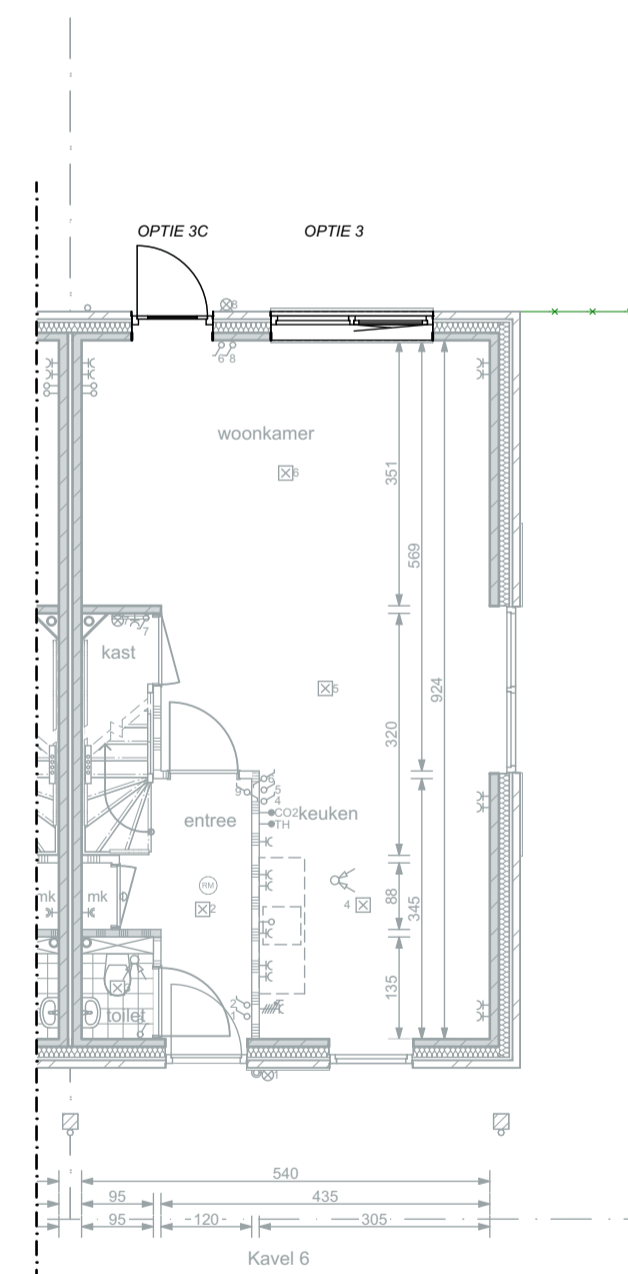
ACHTERGEVEL



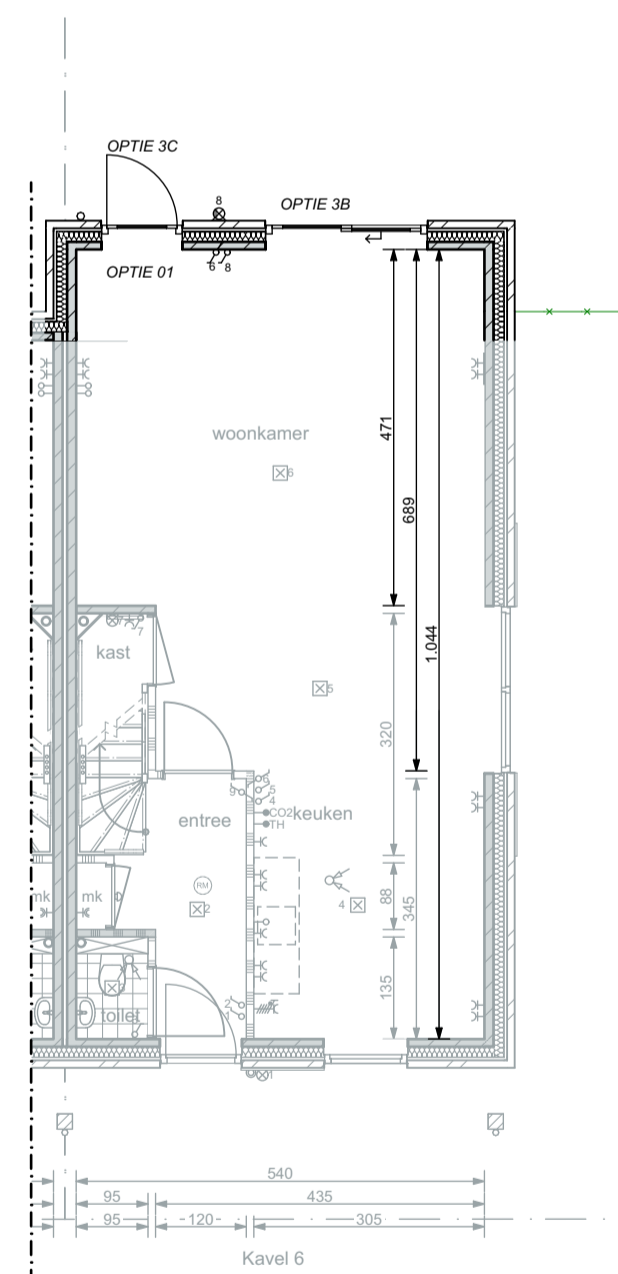
ACHTERGEVEL



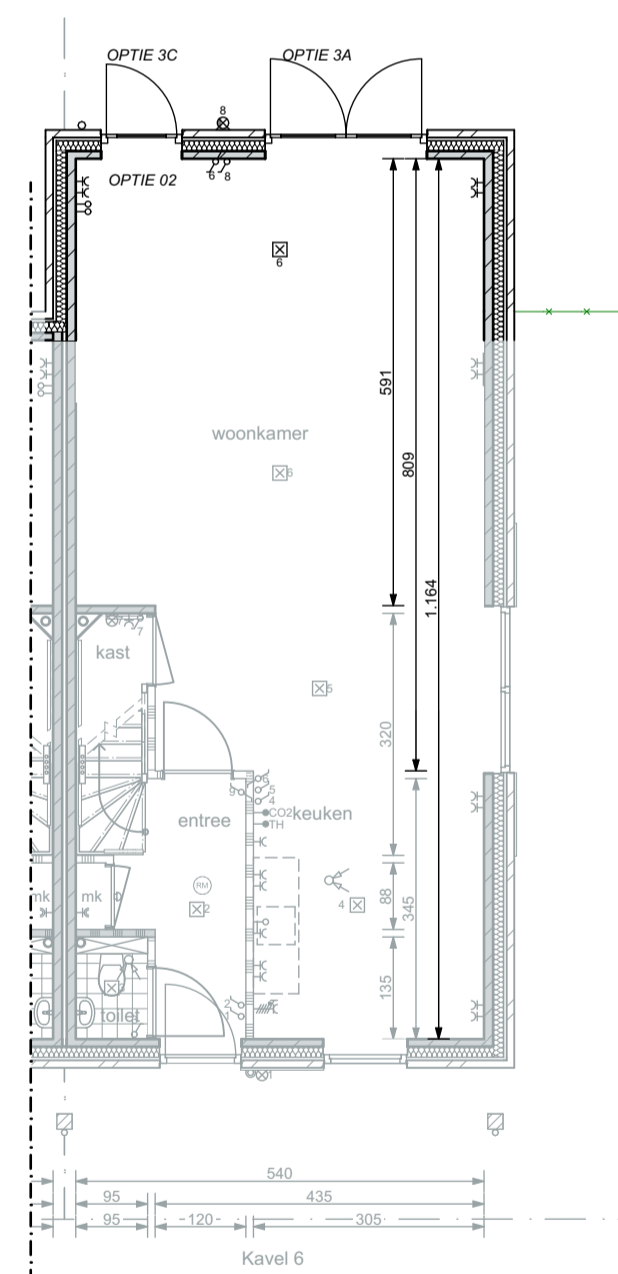
ACHTERGEVEL



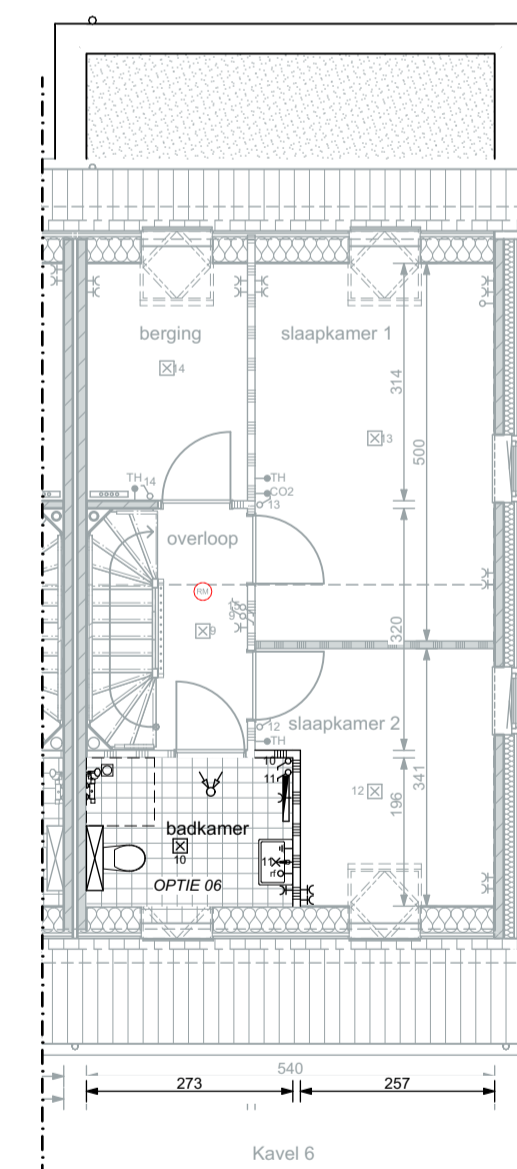
PLATTEGROND; WONING
BEGANE GROND



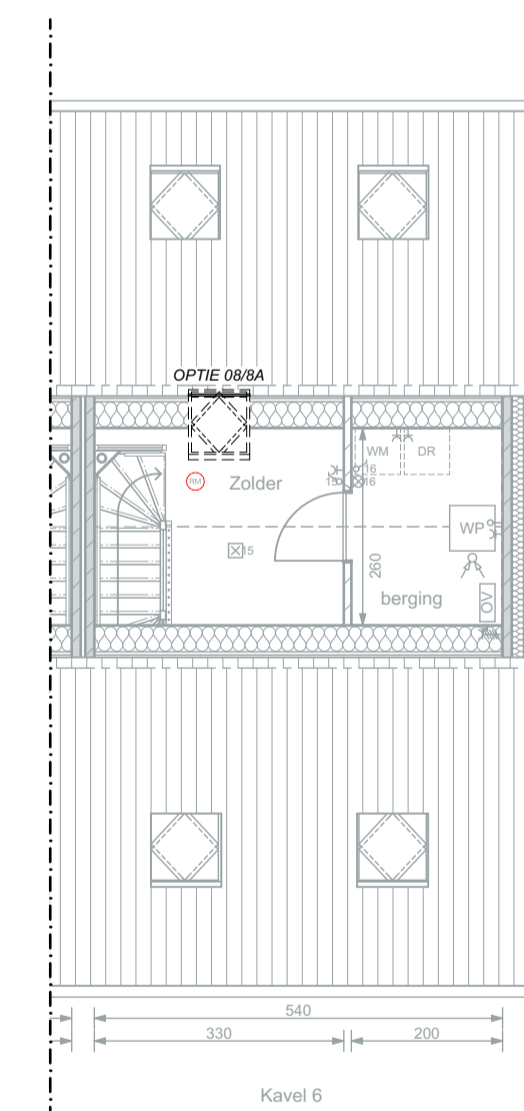
PLATTEGROND; WONING
BEGANE GROND



PLATTEGROND; WONING
BEGANE GROND



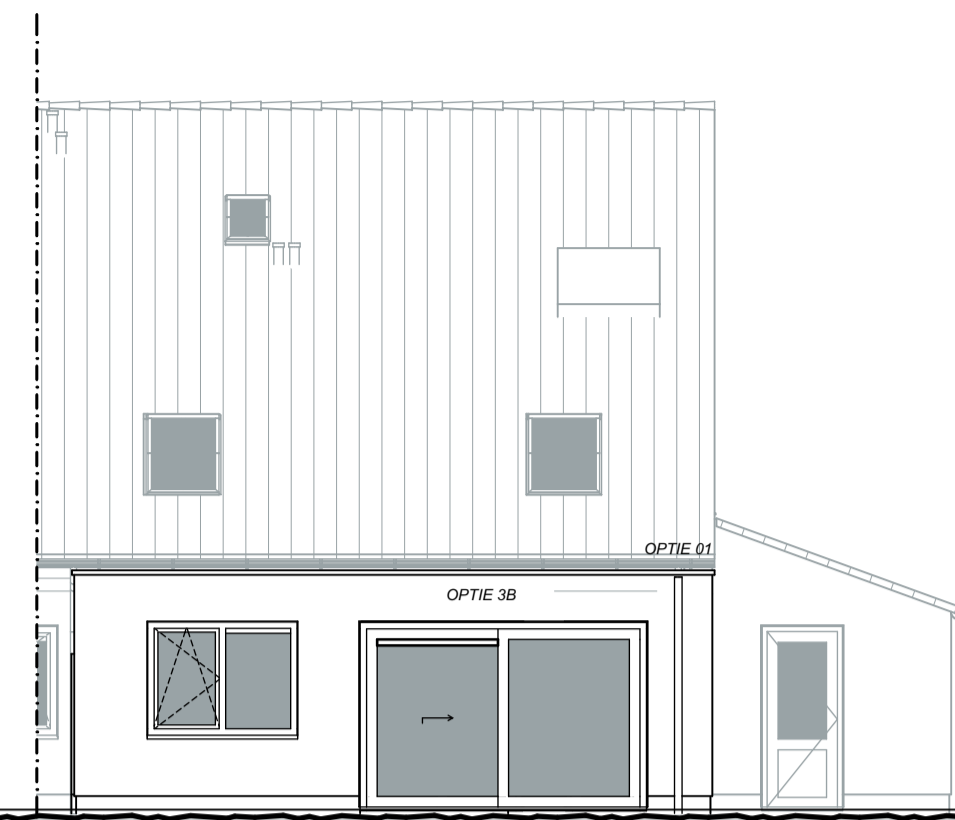
PLATTEGROND; WONING
EERSTE VERDIEPING



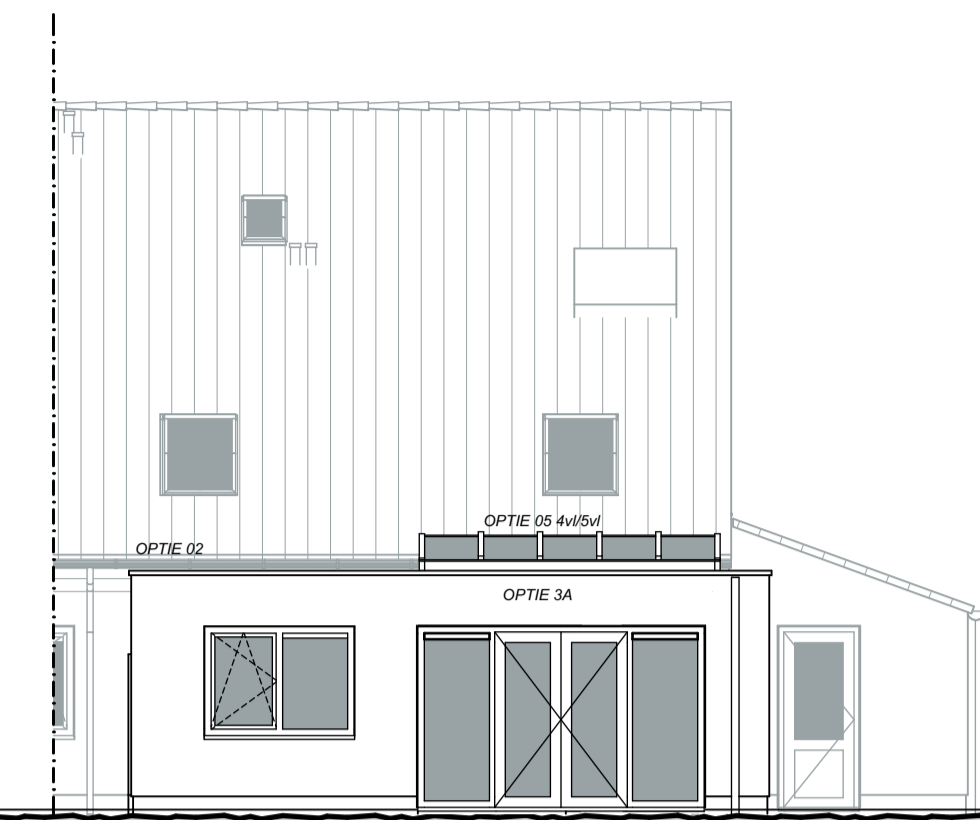
PLATTEGROND; WONING
TWEEDEVERDIEPING



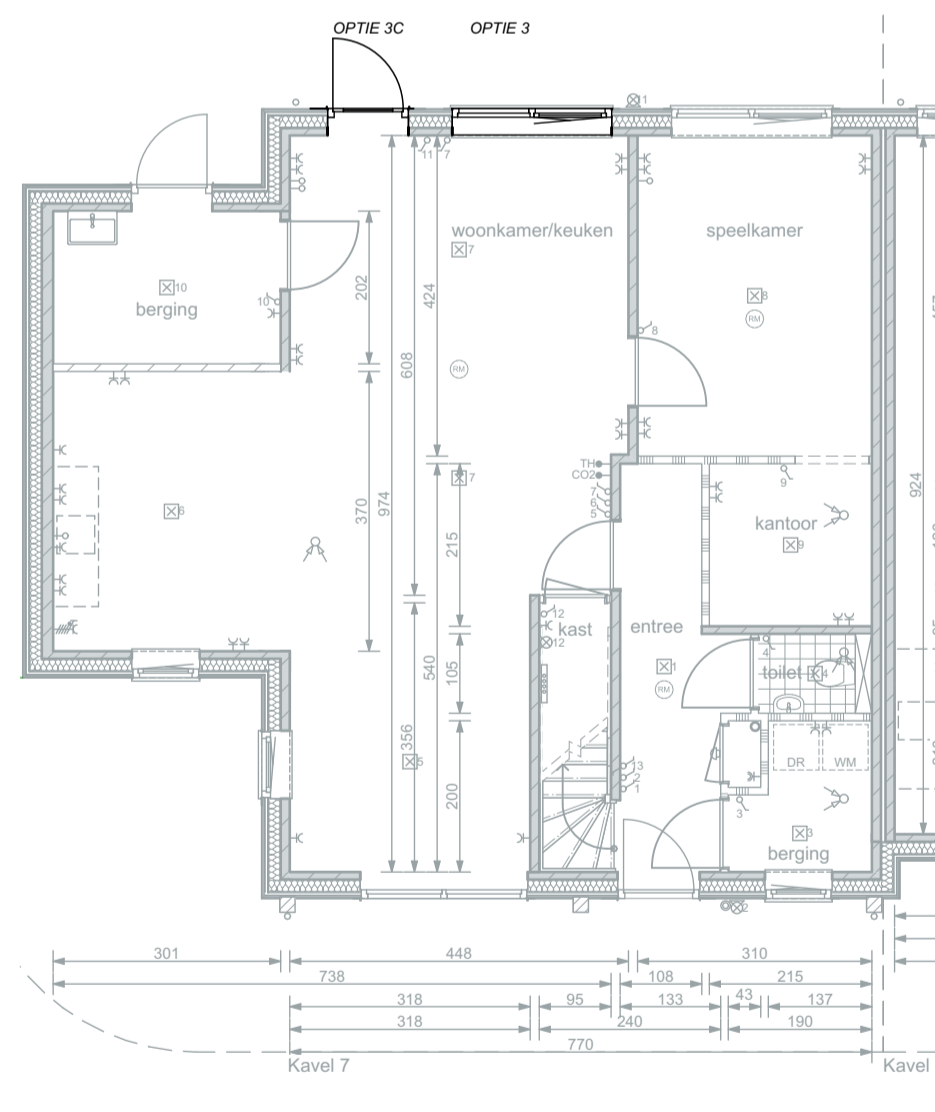
ACHTERGEVEL



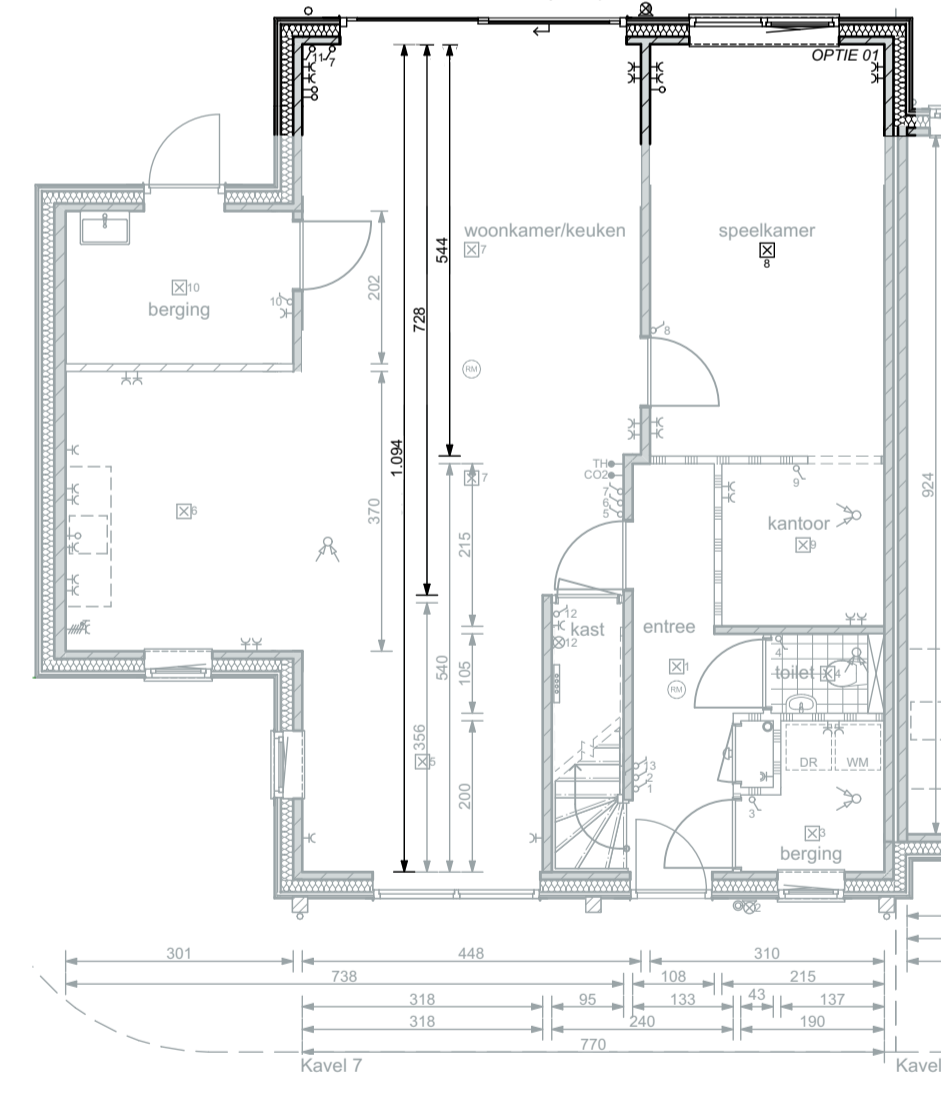
ACHTERGEVEL



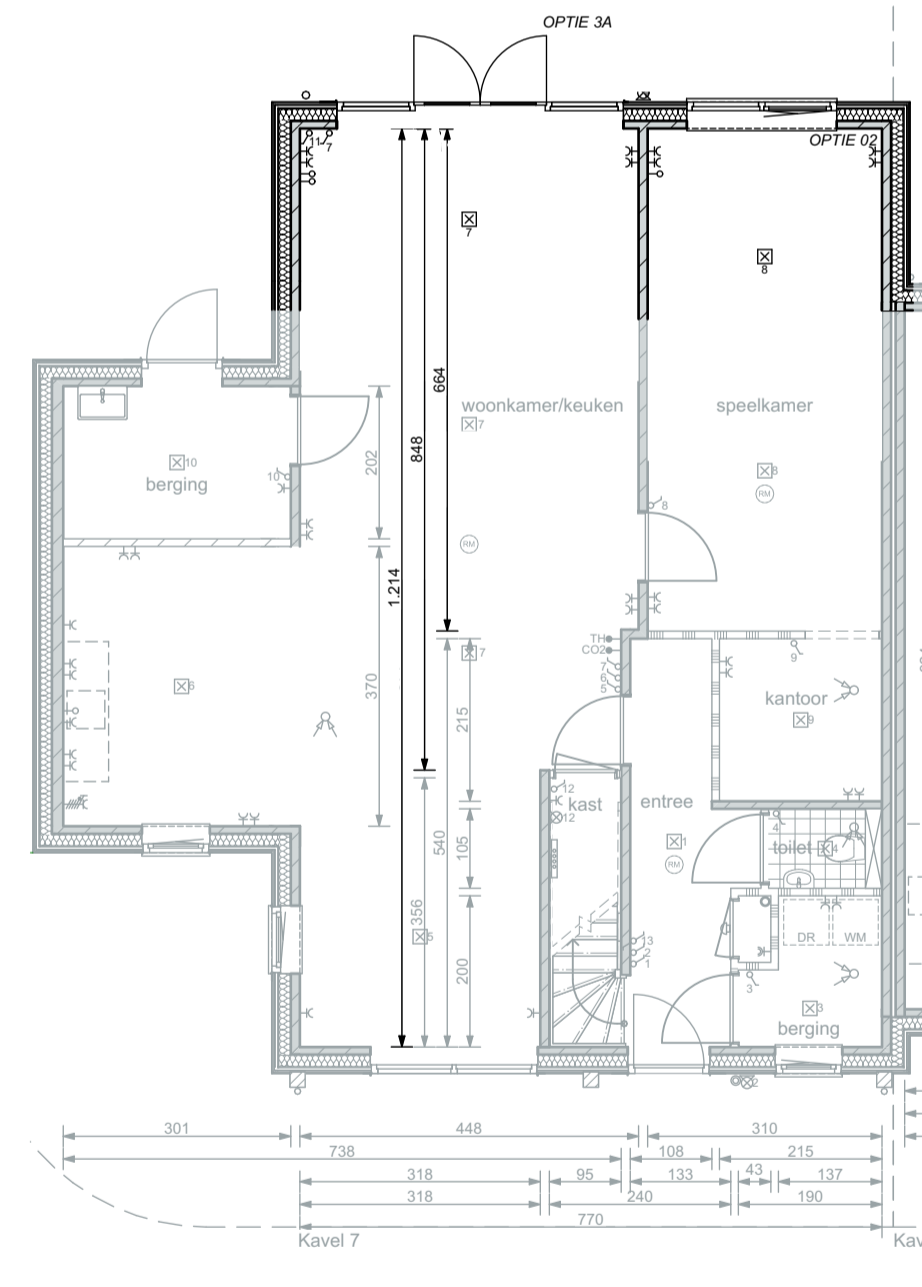
ACHTERGEVEL



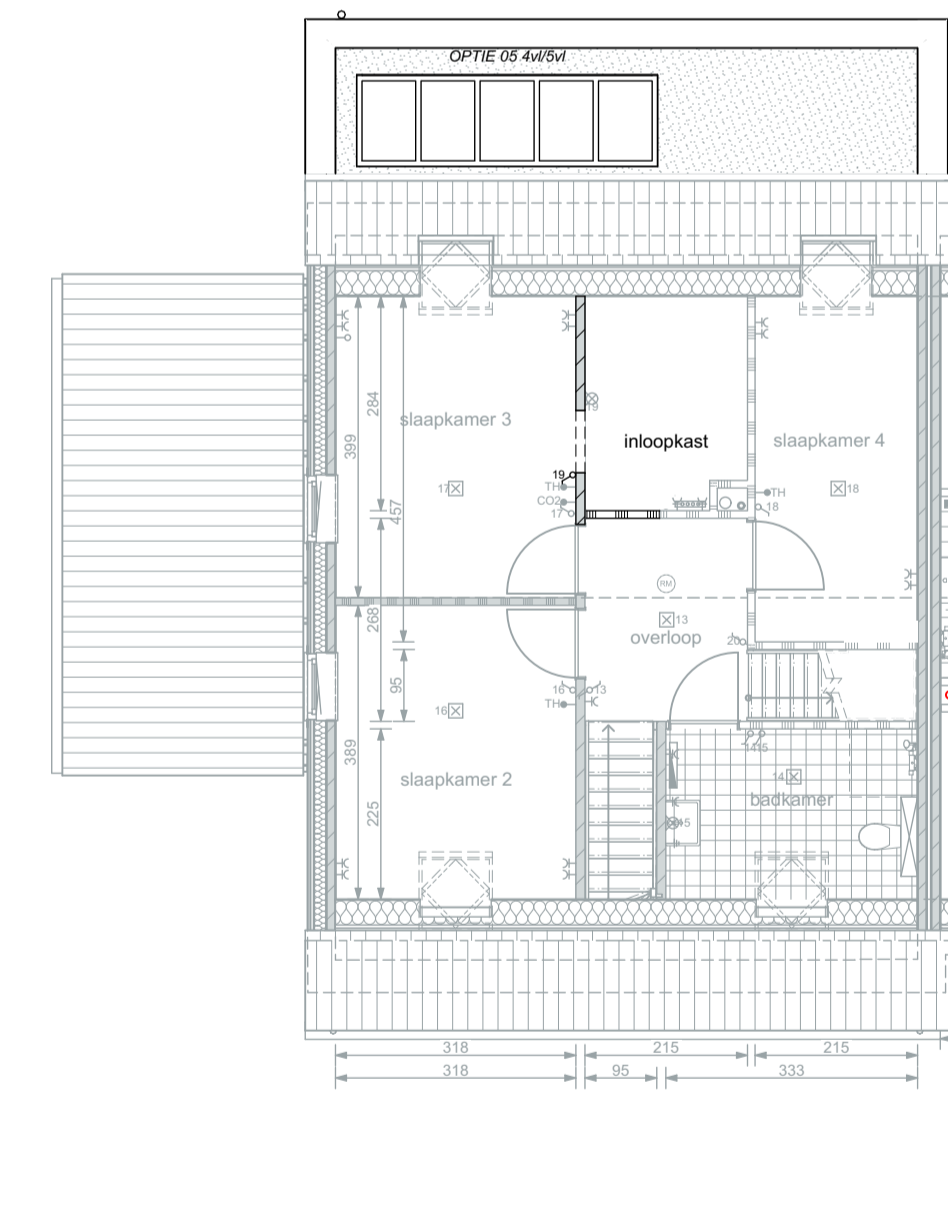
PLATTEGROND; WONING
BEGANE GROND



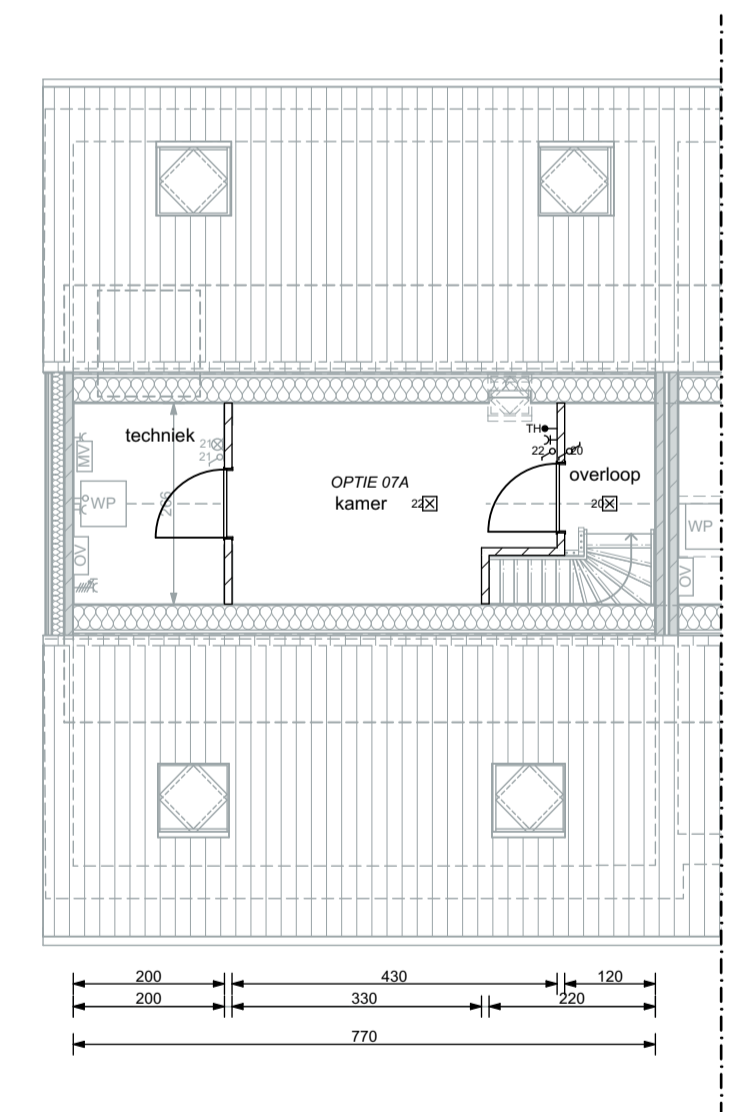
PLATTEGROND; WONING
BEGANE GROND



PLATTEGROND; WONING
BEGANE GROND



PLATTEGROND; WONING
EERSTE VERDIEPING



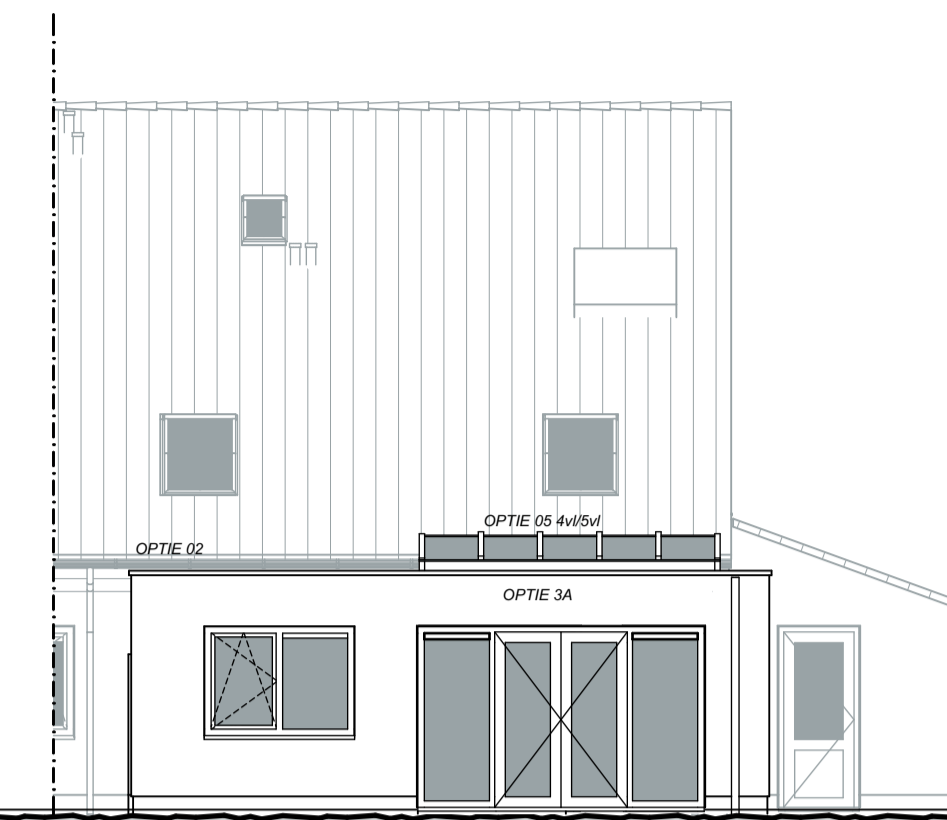
PLATTEGROND; WONING
TWEDE VERDIEPING



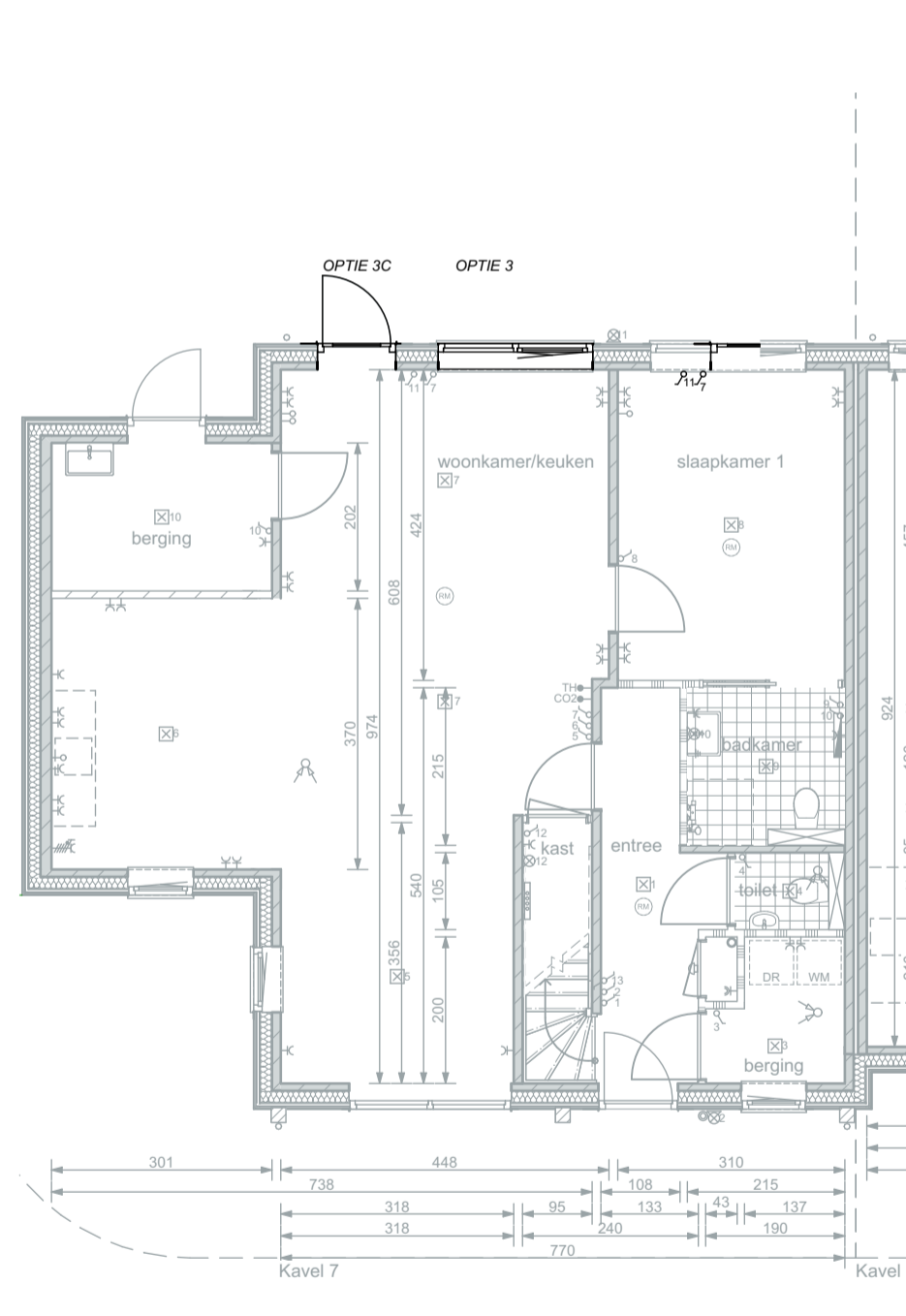
ACHTERGEVEL



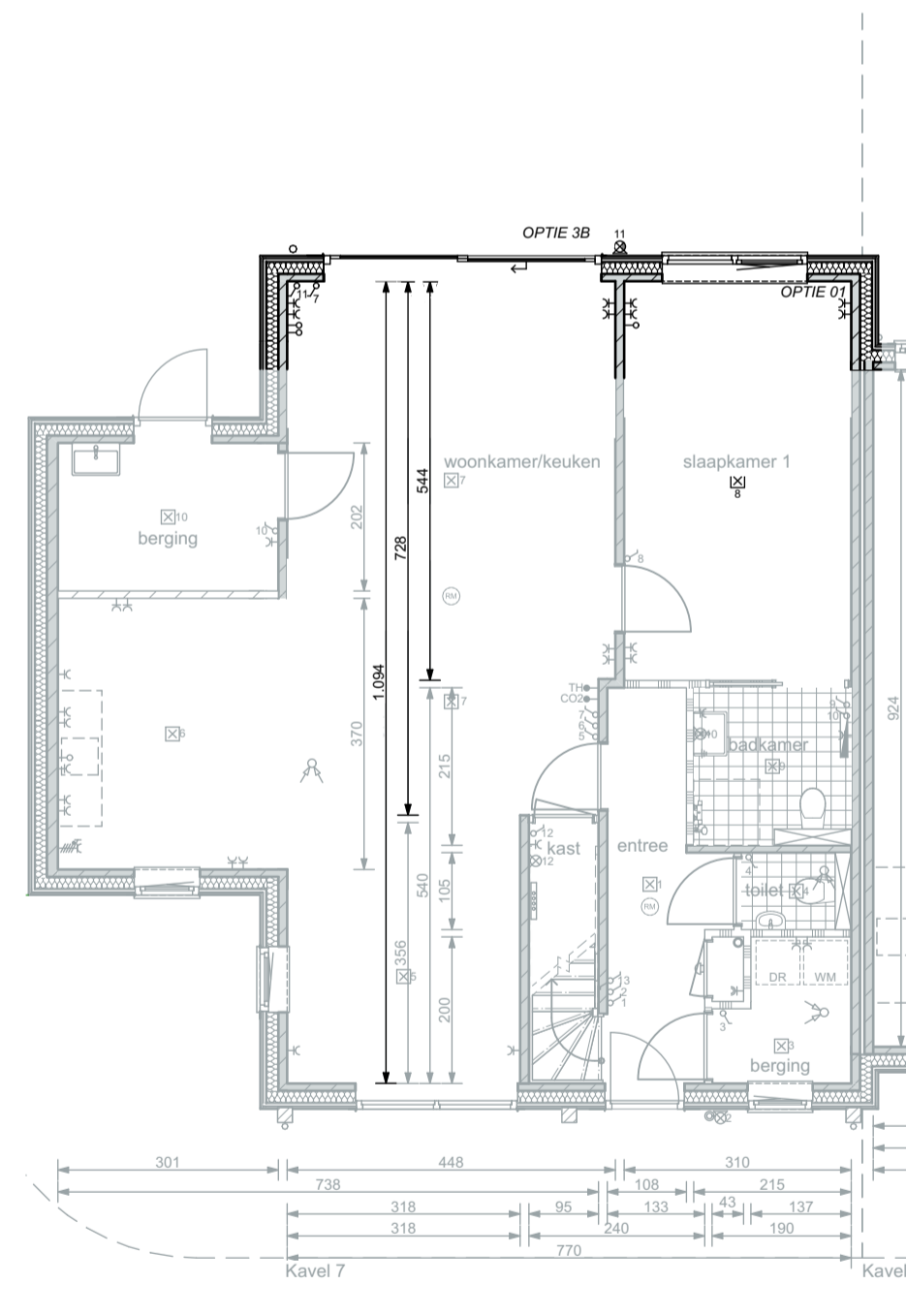
ACHTERGEVEL



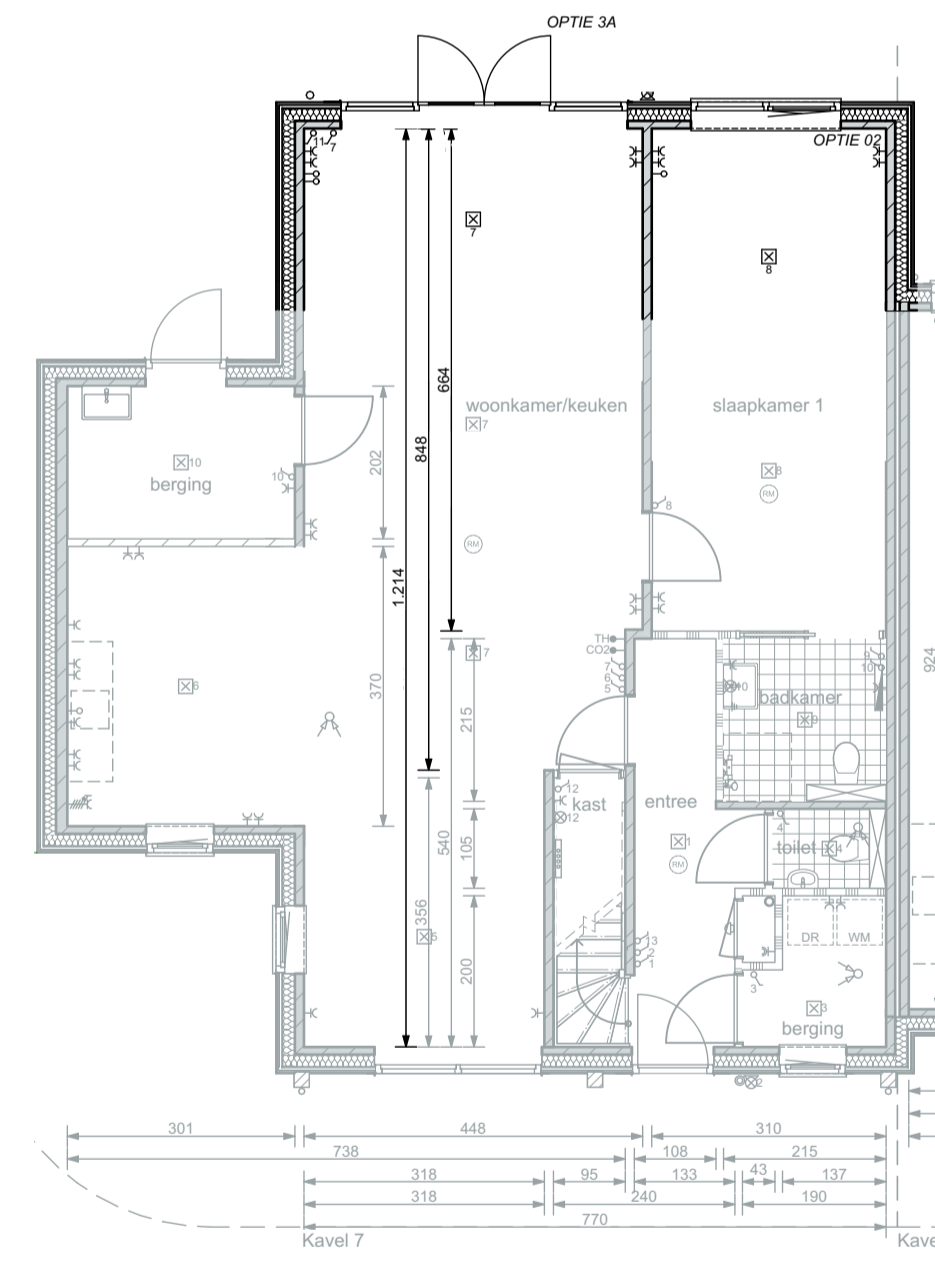
ACHTERGEVEL



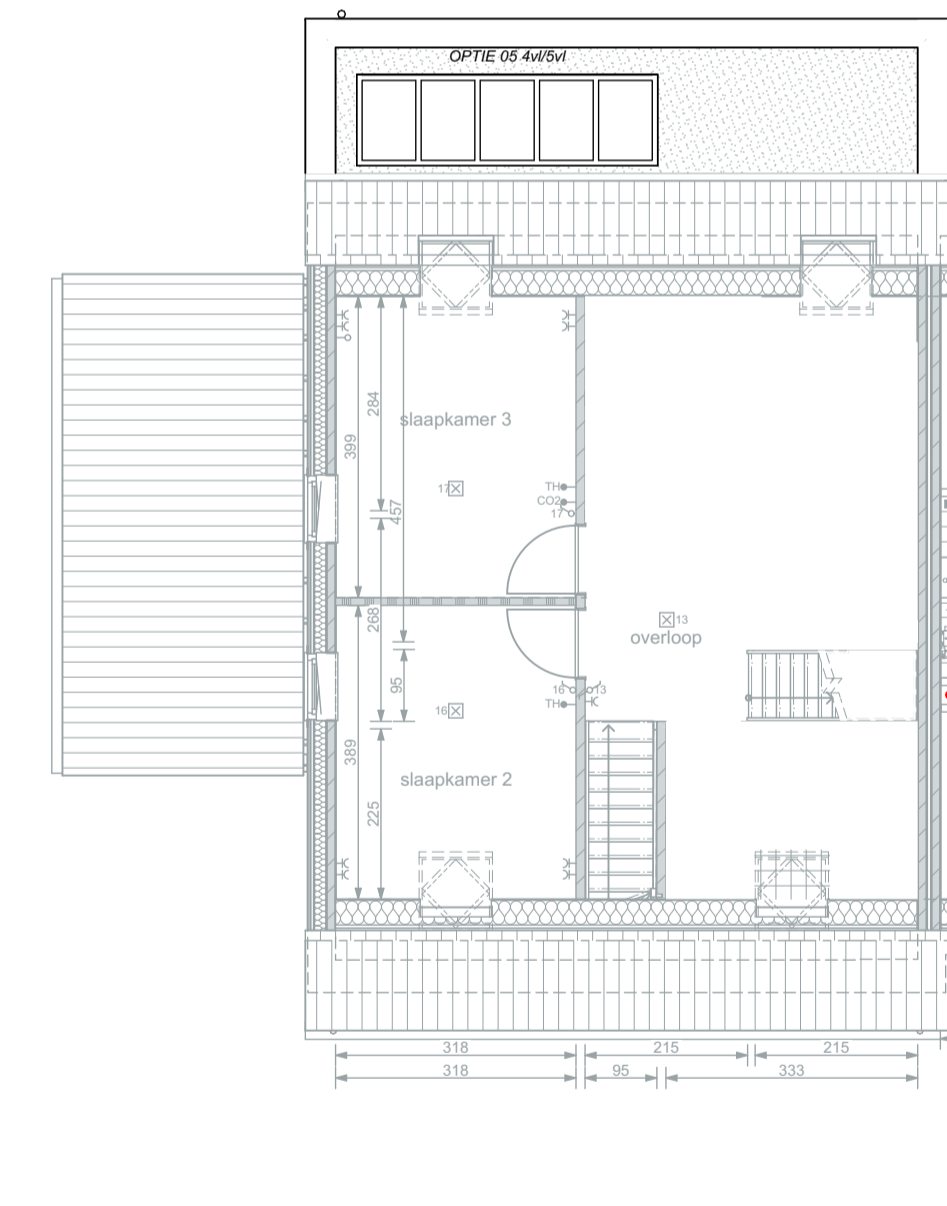
PLATTEGROND; WONING
BEGANE GROND



PLATTEGROND; WONING
BEGANE GROND



PLATTEGROND; WONING
BEGANE GROND



PLATTEGROND; WONING
EERSTE VERDIEPING